

Technical report 24-029

Entanglement Definitions for Tethered Robots: Exploration and Analysis*

G. Battocletti, D. Boskos, D. Tolić, I. Palunko, and B. De Schutter

To cite this work, please refer to the published version:

G. Battocletti, D. Boskos, D. Tolić, I. Palunko, and B. De Schutter, “Entanglement definitions for tethered robots: Exploration and analysis,” *IEEE Access*, vol. 12, pp. 178153–178170, Nov. 2024. doi:[10.1109/ACCESS.2024.3507217](https://doi.org/10.1109/ACCESS.2024.3507217)

Delft Center for Systems and Control
Delft University of Technology
Mekelweg 2, 2628 CD Delft
The Netherlands
phone: +31-15-278.24.73 (secretary)
URL: <https://www.dcsc.tudelft.nl>

* This report can also be downloaded via <https://dpub.eu/24-029>

Entanglement Definitions for Tethered Robots: Exploration and Analysis

GIANPIETRO BATTOCLETTI¹, DIMITRIS BOSKOS¹, DOMAGOJ TOLIĆ^{2,3}, IVANA PALUNKO², and BART DE SCHUTTER¹, (Fellow, IEEE)

¹Delft Center for Systems and Control, Delft University of Technology, 2628 CN Delft, The Netherlands.

²LARIAT - Laboratory for Intelligent Autonomous Systems, University of Dubrovnik, Croatia.

³RIT Croatia, Dubrovnik, Croatia.

Corresponding author: Gianpietro Battocletti (e-mail: g.battocletti@tudelft.nl).

This publication has been supported by funding from the European Union's Horizon 2020 Research and Innovation Programme under grant agreement No 871295 (SeaClear) and by funding from the European Union's Horizon Europe Programme under grant agreement No 1011093822 (SeaClear 2.0).

ABSTRACT In this article we consider the problem of tether entanglement for tethered mobile robots. One of the main risks of using a tethered connection between a mobile robot and an anchor point is that the tether may get entangled with the obstacles present in the environment or with itself. To avoid these situations, a non-entanglement constraint can be considered in the motion planning problem for tethered robots. This constraint is typically expressed as a set of specific tether configurations that must be avoided. However, the literature lacks a generally accepted definition of entanglement, with existing definitions being limited and partial in the sense that they only focus on specific instances of entanglement. In practice, this means that the existing definitions do not effectively cover all instances of tether entanglement. Our goal in this article is to bridge this gap and to provide new definitions of entanglement, which, together with the existing ones, can be effectively used to qualify the entanglement state of a tethered robot in diverse situations. The new definitions find application in motion planning for tethered robots, where they can be used to obtain more safe and robust entanglement-free trajectories.

INDEX TERMS Tethered mobile robots, tether entanglement, entanglement avoidance, motion planning.

I. INTRODUCTION

TETHERED mobile robots are a class of mobile robots characterized by a cabled connection of the robot with an anchor point, or with another robot [1]. Tethered mobile robots (from now on referred to as 'tethered robots' for brevity) find application in a large number of tasks, such as exploration, inspection, or maintenance, and they are employed in ground [2]–[4], underwater, [5], [6], aerial [7]–[9], and space [10]–[12] applications. These tasks are typically addressed either using remotely operated vehicles (ROVs) or unmanned autonomous vehicles (UAVs). In both cases, the cabled connection of a robot to an anchor point can be used as a power source, a communication channel, a lifeline to retrieve the robot in case of malfunctioning, and for accessing additional computational power [1], [13]. However, these advantages do not come without challenges. The tether exerts an external force on the robot, due to gravity, drag, and inertia acting on it [14], and it limits the reachable workspace, due to its finite length [15]. In addition, the tether may get entangled with obstacles present in the environment or with itself, forming knots. In case of multi-robot systems, this problem is amplified as the tethers of different robots can also get entangled with each other [6], [16].

Broadly speaking, entanglement occurs when the movement of a tethered robot is restricted due to the physical interaction of the tether with other objects in the environment [6]. This can happen, for example, when the tether forms a loop around an obstacle, when it gets in contact with an obstacle, or when it gets in contact with the tether of another robot (in multi-robot systems). Since this condition is, in general, disadvantageous or even dangerous for a tethered robot, it is important to avoid it during the robot's motion. This is typically achieved through the addition of a non-entanglement constraint. Non-entanglement constraints capture the fact that some tether configurations, despite being achievable by a tethered robot within the maximum tether length, may hinder the mobility of the robot, requiring it to perform specific operations to recover full motion capabilities. To be able to consistently prevent entanglement, we first need a definition that captures the occurrence of entanglement and that is measurable. Despite the interest in motion planning for tethered robots, entanglement has not been studied extensively in the literature. The existing definitions are generally limited and partial, as they focus only on specific applications and specific instances of entanglement. Moreover, the existing definitions often require specific assumptions on the tether

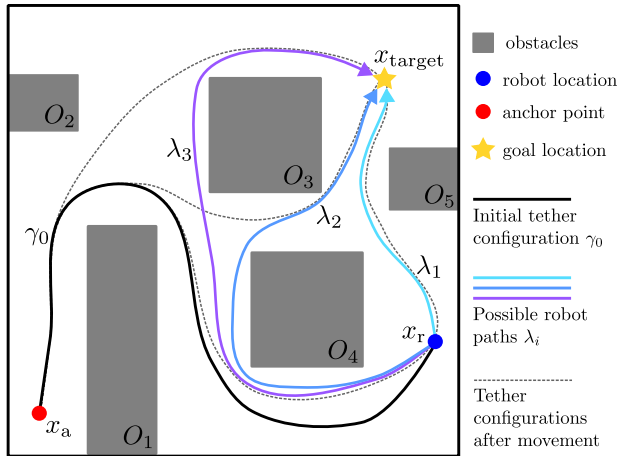


FIGURE 1. Example of a motion planning problem for a tethered robot in a 2D environment. The robot must reach the location x_{target} from its current location x_r . Three possible paths $\lambda_1, \lambda_2, \lambda_3$ are depicted in the image. Given the initial tether configuration γ_0 , the three possible paths would result in three different tether configurations after the motion of the robot, which are represented by the gray dashed lines. Each of the resulting tether configuration can have a different entanglement state depending on the entanglement definition being used.

and on the environment, which limits the applicability of those definitions.

The main application of the entanglement definitions is to use them to add a non-entanglement constraint to the motion planning problem for tethered robots. Several works that use non-entanglement constraints in the motion planning problem for tethered robots already exist in the literature [16]–[20]. However, the resulting motion planning algorithms are often application-specific and tailored to a specific entanglement definition. The introduction of more general entanglement definitions can help in the development of more versatile entanglement-aware motion planning algorithms for tethered robots. In the example of Figure 1, a non-entanglement constraint can be used to exclude one or more of the possible motion paths by evaluating the entanglement state of the tether configuration that would result from the robot moving along such paths. Alternatively, the entanglement definitions can be used to compute a safe set in which the robot must stay to maintain the tether in a non-entangled state. Such a set can then be used as the domain for an existing motion planning algorithms for tethered robots, resulting in safety guarantees in terms of entanglement avoidance. The new entanglement definitions can also provide tools to address the additional challenges that are typical of some application domains of tethered robots. For example, in underwater and aerial applications, the water (or air) current can bring the tether in undesirable configurations, while in space applications the absence of gravity and air drag must be taken into account when predicting the dynamical behavior of the tether.

In this work we provide and analyze a broad set of new entanglement definitions. After reviewing the existing entanglement definitions, we expand and generalize them by considering new entanglement definitions that can be used to

complement the existing ones in the characterization of the entanglement state of a tether. We analyze the properties of the definitions to highlight their advantages, disadvantages, and specific characteristics. In particular, we investigate the restrictions that these definitions introduce on the workspace of a tethered robot. We also compare the definitions with each other and with the existing ones, highlighting the relations between them. Finally, we validate the definitions empirically by comparing them against the opinion of experts in the field of tethered robotics using a survey.

In summary, the contributions of this work are:

- an extensive review and classification of the existing entanglement definitions;
- the introduction of a broad set of new entanglement definitions to expand and supplement the existing ones. Unlike most of the existing entanglement definitions, the new definitions are agnostic to the type of robot, environment, or tether considered, and can be applied both in 2D and 3D environments, to single-robot and multi-robot systems, to loose and slack tethers, and to fixed-length and variable-length tethers;
- the analysis of the properties of the proposed definitions, and the characterization of the workspace of a tethered robot under different entanglement definitions;
- a formal analysis of the relations between all the entanglement definitions, where we highlight the connections and the mutual relations between them;
- an empirical validation of the entanglement definitions against the opinion of experts in the field of tethered robotics.

We remark that, in order to keep this article more focused, in this work we focus exclusively on the presentation, analysis, and comparison of the entanglement definitions. The actual application of these definitions to the motion planning problem will be addressed in our upcoming works.

The article is organized as follows. Section II contains a review of the existing literature on motion planning for tethered robots, with particular attention to the approaches used to define entanglement in previous works. Preliminary concepts and the problem statement are introduced in Section III. In Section IV the new entanglement definitions are stated. The properties of the proposed entanglement definitions are investigated in Section V, while the relations between the proposed definitions and the existing ones are analyzed in Section VI. The analysis of the entanglement definitions is concluded in Section VII with their empirical validation by experts in the field of tethered robotics. Conclusions and open points are given in Section VIII. The proofs of the results presented throughout the article are collected in Appendices A, B, C.

II. RELATED WORK

In the last decades, significant attention has been devoted to the motion planning problem for tethered robots. A variety of different approaches has been investigated to tackle this problem [21]–[25]. Despite the large number of works on the topic, most of the works in the literature on tethered

mobile robots do not consider any entanglement constraint, and focus only on finding a feasible solution for the motion planning problem under the geometric constraints posed by the presence of the tether [21], [26]–[30]. In the works where entanglement has been considered, it has typically been considered only from limited application-specific perspectives. The majority of those works can be grouped into a few distinct categories depending on how they define and manage entanglement. The resulting categories are comprised of works that (i) consider entanglement as the contact between the tether and obstacles; (ii) consider entanglement as the contact between the tethers of different robots (in multi-robot systems); (iii) consider entanglement as the tether looping around obstacles. Most of the works in the literature regard single-agent systems. Some works (in particular those in the third category) consider multi-robot systems instead, where several robots share the same environment.

The works in the first category define entanglement as the contact between the tether and an obstacle. In [31]–[33] a robot connected to an anchor point via a taut tether in a 2D obstacle-rich environment is considered. Entanglement is not strictly prohibited, and its detection is used instead to keep track of the tether configuration, and to obtain information on the location of the obstacles. In [8], [34] the same entanglement definition is applied to an aerial drone moving in a 3D environment. There the goal is to plan the motion of the robot and the variable¹ length of the tether in order to avoid any contact between the taut tether and the obstacles in the environment. This definition of entanglement is used also in [36], where entanglement is avoided through the use of micro-thrusters placed along the tether which allow to actively control its shape and keep it away from obstacles.

Works in the second category consider multi-robot systems where entanglement is defined as the interaction between the tethers of two different robots. In [19], [26], [37] a multi-robot system in an obstacle-free 2D environment is considered. The tethers of all robots are kept taut, so entanglement happens when a bend is formed in a tether. A centralized path planning algorithm is tasked with finding a set of trajectories for the robots that avoid intersections between the tethers of the robots. When avoiding entanglement is impossible, the planner returns instead a motion strategy that minimizes the number of tethers getting entangled. The algorithm is extended to the 3D case in [18], [38]. A more general setting is tackled in [6], [16], where a multi-robot system with slack tethers in a 3D environment is considered. [16] focuses on providing non-entanglement guarantees for a large number of robots in a crowded, obstacle-free environment. In [6] a decentralized algorithm is used to compute kinodynamically feasible paths in the presence of obstacles. To identify tether configurations that are at risk of entanglement, [6], [16] analyze their topological properties through the computation of

¹In some works such as [17], [34], [35] the length of the tether is varied over time in order to keep it always taut by using a winch or a dedicated tether length control system.

a signature² of each tether configuration, and relate specific patterns in the signatures to the entanglement state of the tethers.

The last group of works considered here defines entanglement as the looping of the tether around obstacles. In [17], [39], [40] a robot moving in a 2D obstacle-rich environment is considered, and any tether configuration that does a full loop around an obstacle is considered to be entangled and is therefore avoided.³ A variation of this definition is considered in several works [2], [35], [43], [44] that focus on exploration and inspection tasks in 2D obstacle-rich environments, where a number of waypoints must be visited by a tethered robot before returning to the starting location. Since in those works the robot always returns to the initial location at the end of its motion, they consider only closed tether configurations, where the initial point and end point coincide. The non-entanglement constraint is then stated in the form of a non-looping constraint for the whole tether. This means that at the end of the motion there must be no obstacle being encircled by the tether [5].

III. PRELIMINARIES

Some preliminary definitions are introduced first to facilitate the exposition of the entanglement definitions.

A. WORKSPACE TOPOLOGY

Let the workspace \mathcal{X} be an open convex subset of \mathbb{R}^n with $n \in \{2, 3\}$, and let $\{O_i\}_{i=1, \dots, m}$ be a finite set of disjoint closed obstacles having a non-empty simply-connected interior and without degenerate boundary⁴ [46]. We indicate with $\mathcal{O} = \cup_{i=1}^m O_i$ the obstacle region, corresponding to the part of \mathcal{X} that is covered by obstacles. We indicate with $\partial\mathcal{O}$ the boundary of the obstacle region, and with $\text{int } \mathcal{O}$ its interior. The free workspace is defined as⁵ $\mathcal{X}_{\text{free}} = \text{cl}(\mathcal{X} \setminus \mathcal{O})$ [46]. We assume that $\mathcal{X}_{\text{free}}$ is formed by a single path-connected component. If this condition were not true, there would be locations in the free space that could not be reached from a given starting point through a continuous path. In that case, the unreachable locations would be considered as parts of the obstacle region.

A *path* γ is a continuous function $\gamma : [0, 1] \rightarrow \mathcal{X}$ [48]. In the rest of the current article, with a slight abuse of notation, γ will be used to indicate both the image and the function that generates it. We denote by $\text{len}(\gamma)$ the length of a path γ . In the following, we only consider finite-length paths. A path γ is said to be *obstacle-free* if $\gamma(s) \in \mathcal{X}_{\text{free}}, \forall s \in [0, 1]$. The

²More details on the tether signature are provided in Section III-B and in Appendix A.

³A similar constraint is introduced for computational reasons also in other articles on motion planning for tethered robots such as [21], [41], [42]. However, therein the constraint is not intended explicitly for entanglement avoidance, so we do not formally consider those works as part of this category.

⁴An obstacle does not have a degenerate boundary if for any point of the boundary there is an arbitrarily close interior point [45].

⁵We remark that the closure operator is introduced in the definition of the free workspace to make sure that the shortest path between any two points in $\mathcal{X}_{\text{free}}$ exists (see Lemma 3) [46], [47].

points $\gamma(0)$ and $\gamma(1)$ are called respectively initial point and terminal point of the path, or, collectively, endpoints of the path. A reparametrization of a path γ is a path $\gamma \circ \alpha$, where α is a continuous, non-decreasing surjective mapping $\alpha : [0, 1] \rightarrow [0, 1]$ with $\alpha(0) = 0$ and $\alpha(1) = 1$ [49]. We indicate with \mathcal{A} the set of all the mappings $\alpha : [0, 1] \rightarrow [0, 1]$ having these properties. Given two paths γ_1, γ_2 such that $\gamma_1(1) = \gamma_2(0)$, their concatenation $\gamma_3 = \gamma_1 \diamond \gamma_2$ is the new path defined by

$$\gamma_3(s) = \begin{cases} \gamma_1(2s), & 0 \leq s \leq \frac{1}{2}, \\ \gamma_2(1 - 2s), & \frac{1}{2} \leq s \leq 1. \end{cases}$$

For any path γ from x_1 to x_2 we define the reverse path $\gamma^{\text{reverse}}(s) = \gamma(1 - s)$, i.e., the path going from x_2 to x_1 [48]. The convex hull of a path γ is defined as

$$\text{conv}(\gamma) = \left\{ \sum_{i=1}^n a_i x_i : a_i \in \mathbb{R}, \sum_{i=1}^n a_i = 1, a_i \geq 0, x_i \in \gamma \right\}.$$

We define now some relevant paths that will be used in the rest of this article. The first is the *straight line segment* between two points. Given two points $x_1, x_2 \in \mathcal{X}$, the straight line segment $l_{x_1, x_2} : [0, 1] \rightarrow \mathcal{X}$ between x_1 and x_2 is defined by $l_{x_1, x_2}(s) = (1 - s)x_1 + sx_2$. Next, we introduce the restriction of a path γ to an interval $[s_1, s_2]$. Given a path γ and an interval $[s_1, s_2] \subseteq [0, 1]$, we define the path $\gamma_{[s_1, s_2]} : [0, 1] \rightarrow \mathcal{X}$ by $\gamma_{[s_1, s_2]}(s) = \gamma(s_1 + s(s_2 - s_1))$, which corresponds to the part of the path γ between $\gamma(s_1)$ and $\gamma(s_2)$. We also define the notion of a shortest path among a set of paths: given a set of paths S we denote a shortest path in S by

$$\gamma_S^* \in \arg \min_{\gamma \in S} (\text{len}(\gamma)),$$

provided that such a path exists [45], [50]. We denote a globally shortest path between two points as $\gamma_{x_1, x_2}^* := \gamma_{\Gamma_{x_1, x_2}}^*$, where Γ_{x_1, x_2} is the set of all paths between x_1 and x_2 , defined as

$$\Gamma_{x_1, x_2} = \{\gamma : [0, 1] \rightarrow \mathcal{X}_{\text{free}} : \gamma(0) = x_1, \gamma(1) = x_2\}.$$

Given the topological properties of $\mathcal{X}_{\text{free}}$, there always exists a shortest path between two points, as formalized in Lemma 3 (see Appendix A). Finally, we define a *taut path* as a locally shortest path. Formally, a path γ is called taut if for all $s \in [0, 1]$ there exists an interval J_s containing a neighborhood of s such that γ_{J_s} is a shortest path [51].

B. PATHS AND HOMOTOPY EQUIVALENCE

We focus now on paths lying in $\mathcal{X}_{\text{free}}$. In a topological space, the presence of obstacles (or ‘punctures’) gives rise to multiple homotopy classes in which a path can lie. Informally, two paths γ_1, γ_2 are said to belong to the same homotopy class if they can be continuously transformed into one another without crossing any obstacle. Three types of homotopic equivalence relationships are considered in this work:

1) Free Homotopy

Two paths γ_1, γ_2 are said to be *freely homotopic*⁶ (or to belong to the same *free homotopy class*) if there exists a continuous function $H : [0, 1] \times [0, 1] \rightarrow \mathcal{X}_{\text{free}}$ such that $H(s, 0) = \gamma_1(s), H(s, 1) = \gamma_2(s), \forall s \in [0, 1]$ [48]. Being freely homotopic is an equivalence relation on the set of all continuous maps from $[0, 1]$ to $\mathcal{X}_{\text{free}}$ [52]. We indicate the existence of a freely homotopic relation between two paths with $\gamma_1 \simeq \gamma_2$ [52]. The set of all the free homotopies between two curves γ_1, γ_2 is indicated with $\mathcal{H}_{\gamma_1, \gamma_2}$. Given a homotopy H , we denote by $H(s, \cdot) : [0, 1] \rightarrow \mathcal{X}_{\text{free}}$ the path $t \mapsto H(s, t)$ that goes from the point $\gamma_1(s)$ to the point $\gamma_2(s)$.

2) Path Homotopy

Two paths γ_1, γ_2 with the same endpoints, i.e., such that $\gamma_1(0) = \gamma_2(0) = x_1$ and $\gamma_1(1) = \gamma_2(1) = x_2$, are said to be *path-homotopic* if there exists a continuous mapping $H : [0, 1] \times [0, 1] \rightarrow \mathcal{X}_{\text{free}}$ such that $H(s, 0) = \gamma_1(s), H(s, 1) = \gamma_2(s), \forall s \in [0, 1]$, and $H(0, t) = x_1, H(1, t) = x_2, \forall t \in [0, 1]$ [48]. Given a pair of fixed points x_1 and x_2 , path homotopy is an equivalence relation on Γ_{x_1, x_2} [52]. We indicate the existence of a path homotopy relationship between two paths with $\gamma_1 \sim \gamma_2$ [52]. We indicate by $\Gamma_{x_1, x_2} / \sim$ the set of all path homotopy classes between the points x_1 and x_2 , and by $[\gamma]$ the path homotopy class of a path γ [52]. We denote the path homotopy between a path γ and a point x_0 with $\gamma \sim x_0$, where x_0 indicates a constant map from the interval $[0, 1]$ to the point x_0 [52].

A common approach to determine the path homotopy class of a path consists in computing its *signature*. In 2D, a signature is a function $\mathfrak{h} : \Gamma_{x_1, x_2} \rightarrow \Gamma_{x_1, x_2} / \sim$ that maps every path γ to its path homotopy class [53]. For more details on the constructions of signatures see [48], [53], [54], and Construction 1 and Proposition 5 in Appendix A.

3) Relative homotopy

The third type of homotopy equivalence considered is that of *relative homotopy* [49].⁷ In this case we consider paths with distinct endpoints, and we require the homotopic transformation between the two paths to make the endpoints move along pre-specified paths. Let γ_1, γ_2 be two paths, λ be a path from $\gamma_1(0)$ to $\gamma_2(0)$, and λ' be a path from $\gamma_1(1)$ to $\gamma_2(1)$. The paths γ_1 and γ_2 are said to be *relatively homotopic along λ, λ'* if there exists a continuous mapping $H_{\lambda, \lambda'} : [0, 1] \times [0, 1] \rightarrow \mathcal{X}_{\text{free}}$ such that $H_{\lambda, \lambda'}(s, 0) = \gamma_1(s), H_{\lambda, \lambda'}(s, 1) = \gamma_2(s), \forall s \in [0, 1]$, and that $H_{\lambda, \lambda'}(0, t) = \lambda(\alpha(t)), H_{\lambda, \lambda'}(1, t) = \lambda'(\alpha'(t)), \forall t \in [0, 1]$, where $\alpha, \alpha' \in$

⁶In the literature the word ‘freely’ is often omitted when defining this type of homotopic relation. We use it to distinguish it more clearly from the other two types of homotopy, following the naming convention used in [52].

⁷We largely base the definition of relative homotopy on [49]. A definition of relative homotopy is given also in [52], but it is different from the one we use. We also want to remark that, while we use a number of definitions and concepts from [49], the notation and the naming convention has been changed. This has been done mainly to uniformize the notation with the other homotopy definitions. In particular, we do not look for a *leash map* between two *leashes*, but for a *relative homotopy map* between two *paths*.

\mathcal{A} are, respectively, reparametrizations of λ and λ' . For any fixed pair of paths λ, λ' , being relatively homotopic along λ and λ' is an equivalence relation which we indicate as $\gamma_1 \simeq_{\lambda, \lambda'} \gamma_2$.

C. HOMOTOPIC FRÉCHET DISTANCE

The homotopic Fréchet distance is a metric suitable to measure the distance between two paths [55]. The homotopic Fréchet distance, which is a variation of the Fréchet distance [56], measures the distance between two obstacle-free paths γ_1, γ_2 while taking into account the presence of obstacles between them [49]. More precisely, the homotopic Fréchet distance computes the distance between two paths γ_1, γ_2 as the maximum length of a path $H(s, \cdot)$ that belongs to a free homotopy H between a reparametrization of γ_1 and a reparametrization of γ_2 . The homotopic Fréchet distance is defined as

$$\bar{F}(\gamma_1, \gamma_2) := \inf_{H \in \mathcal{H}_{\gamma_1, \gamma_2}} \left[\max_{s \in [0, 1]} \text{len}(H(s, \cdot)) \right],$$

where we recall that $\mathcal{H}_{\gamma_1, \gamma_2}$ is the set of all the free homotopies between the paths γ_1 and γ_2 .

D. PROBLEM FORMULATION

Let $\mathcal{X}, \mathcal{O}, \mathcal{X}_{\text{free}}$ be respectively the workspace, the obstacle region, and the free workspace where a tethered robot operates. The tether is represented by a finite-length obstacle-free path γ called *tether configuration*. The tether initial point $x_a = \gamma(0)$ represents the anchor point, while the tether terminal point $x_r = \gamma(1)$ represents the robot location. Given a tether configuration γ , we seek to determine its entanglement state. In particular, we aim to obtain a set of general entanglement definitions that do not depend on the properties of the tether nor on the properties of the environment, and that align with the human intuition of what entanglement is.

The proposed definitions work both for single-robot and multi-robot systems. In case of multi-robot systems, a set of q robots $\mathcal{I} = \{1, 2, \dots, q\}$ is considered. The robots are located in distinct points $x_{r,i}, i \in \mathcal{I}$, and their tethers have distinct anchor points $x_{a,i}, i \in \mathcal{I}$. For the sake of simplicity, it is assumed that the tethers do not intersect with each other, i.e., $\gamma_i \cap \gamma_j = \emptyset, \forall i \neq j$. The entanglement state is determined for a single robot $i \in \mathcal{I}$. From the point of view of robot i the other tethers $\gamma_j, j \in \mathcal{I} \setminus \{i\}$ are seen as obstacles; specifically, the obstacle region for robot i is $\mathcal{O}_i = \mathcal{O} \cup \bigcup_{j=1, j \neq i}^q \mathcal{O}_\varepsilon(\gamma_j)$ for some $\varepsilon > 0$, where $\mathcal{O}_\varepsilon(\gamma_j)$ is the ε -inflation⁸ of the tether γ_j [45]. In multi-robot systems, a tether is then considered not entangled according to some non-entanglement definition if there exists an $\varepsilon > 0$ for which the tether is not entangled under the corresponding ε -inflation of the other tethers.

⁸The ε -inflation of a path γ_j is the set $\mathcal{O}_\varepsilon(\gamma_j) = \{x : \text{dist}(x, \gamma_j) \leq \varepsilon, x \in \mathcal{X}\}$. We introduce this representation of the tethers of the other robots in order to unify the treatment of all the entanglement definitions, and to make the definition of $\mathcal{X}_{\text{free}}$ consistent with the use of homotopy transformations. In fact, if the tether of another robot were represented solely as a curve, it would have no effect on $\mathcal{X}_{\text{free}}$ due to the use of the $\text{cl}(\cdot)$ operator in its definition, and thus it would be ignored when defining homotopic transformations [45].

It is worth mentioning here that in the literature a difference is sometimes made between taut and slack tethers. The definitions proposed in this article can handle both types of tether configurations and we will typically not distinguish between them. In addition, all the proposed definitions can handle both a 2D and a 3D workspace. Following an assumption commonly used in the literature, in 2D the tether is allowed to intersect with itself, forming loops, which in practice allows the robot to cross its own tether.

IV. NON-ENTANGLEMENT DEFINITIONS

In this section we present the new non-entanglement definitions. The proposed definitions provide a criterion to determine when a given tether configuration is not entangled, which is why from now on we will refer to the definitions as *non-entanglement definitions*.⁹ We start this section with the review of the definitions available in the literature (Section IV-A), which is organized following the categories that have been introduced in Section II. We then proceed to present the proposed non-entanglement definitions (Section IV-B). We conclude this section by discussing a relaxation of the non-entanglement definitions (Section IV-C).

A. EXISTING NON-ENTANGLEMENT DEFINITIONS

The non-entanglement definitions found in the literature are reviewed here. Not all the definitions are stated as found in the literature, but in some cases they are reported in an equivalent formulation in order to adhere to our convention of providing non-entanglement definitions and to keep a uniform notation.

The first category of works identified in Section II defines entanglement as a situation where a taut tether forms a bend at the point of contact with an obstacle [31], [32].

Definition 1 (Taut Tether Contact with Obstacle). Given two points $x_a, x_r \in \mathcal{X}_{\text{free}}$ and a taut tether configuration γ , the tether is not entangled if $\gamma = l_{x_a, x_r}$, i.e., if the taut tether coincides with a straight line segment.

Works in the second category consider multi-robot systems in obstacle-free environments and define entanglement as the creation of a bend in a tether due to the interaction with another robot's tether [18], [26].

Definition 2 (Taut Tether Contact with Other Tethers). Let $\mathcal{I} = \{1, 2, \dots, q\}$ represent a set of q robots composing a multi-robot system in an environment where the tethers of the robots are the only obstacles. Given the robot $i \in \mathcal{I}$, which is located in $x_{r,i}$ and is connected through a taut tether γ_i to its anchor point $x_{a,i}$, the tether γ_i is not entangled if $\gamma_i = l_{x_{a,i}, x_{r,i}}$.

A more general version of Definition 2 is provided in [6], [16], where entanglement between multiple slack tethers is defined.

⁹The reason for this choice versus considering *entanglement definitions* is that, in most of the problems in which we plan to use the definitions, the goal is to maintain a non-entangled tether configuration. Therefore, we state the definitions using conditions that identify a non-entangled tether configuration, so they can be applied directly in the form in which they are presented here.

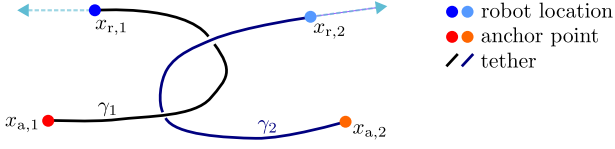


FIGURE 2. Example of entanglement with respect to Definition 3. Two robots and their respective tethers are shown in an obstacle-free 3D environment. If the robots continue moving along the dashed lines, the tethers will come into contact, restricting the motion capabilities of the two robots. The image is adapted from [6].

Definition 3 (Entanglement between Slack Tethers). Let $\mathcal{I} = \{1, 2, \dots, q\}$ represent a set of q robots composing a multi-robot system in a 3D environment. Consider a robot $i \in \mathcal{I}$, its tether configuration γ_i , and a homotopy signature of its tether $\mathfrak{h}(\gamma_i)$ computed on a projection of the environment on a 2D plane.¹⁰ The tether configuration γ_i is not entangled if its signature $\mathfrak{h}(\gamma_i)$ contains the letter z_j corresponding to another robot $j \in \mathcal{I} \setminus \{i\}$ at most once.

Intuitively, the definition corresponds to requiring that the tethers of two different robots do not cross each other more than once. Otherwise, they could be at a configuration like the one shown in Figure 2, where the tethers are at risk of coming in contact if the two robots continue moving in their current directions.

The third category of non-entanglement definitions considers tethers that form loops around obstacles. The first version of this definition considers only 2D scenarios and defines as entangled all configurations containing a loop (i.e., a self-intersection of the tether) around an obstacle [17].

Definition 4 (2D Tether Loop around Obstacle). In a 2D workspace, a tether configuration γ is not entangled if, for any $s_1, s_2 \in [0, 1]$, $s_1 \leq s_2$ such that $\gamma(s_1) = \gamma(s_2)$, it holds that $\gamma|_{[s_1, s_2]} \sim \gamma(s_1)$.

Definition 4 requires that every loop in the tether is path-homotopic to a constant map.¹¹ The second version of this definition uses the same type of constraint but extends it to the whole tether configuration, considering only closed tether configurations, i.e., those where $x_a = x_r$. This corresponds to the situation where a robot has traveled in the environment and has returned to x_a . In this case, the requirement for non-entanglement is that the tether configuration can be homotopically deformed to the anchor point [5].

Definition 5 (Closed Tether Homotopy to Constant Map). A tether configuration γ such that $\gamma(0) = \gamma(1) = x_a$ is not entangled if $\gamma \sim x_a$, i.e., if γ is path-homotopic to x_a .

¹⁰More details on the projection procedure can be found in [6], [16].

¹¹In [17] this definition is stated as $\gamma(s) = \gamma(s') \iff s = s'$. However, in [17] a taut tether is assumed, which implies that loops can only happen around obstacles. The version of the definition reported here is a generalization of the definition to any type of tether configuration.

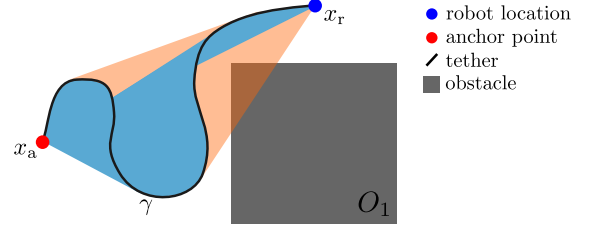


FIGURE 3. Example of the Obstacle-free Convex Hull and Obstacle-free Linear Homotopy non-entanglement definitions (Definition 6 and 7) applied to a tether configuration γ . The blue shaded region represents the set of points covered by the linear homotopic transformation H from γ and to x_a . The blue shaded region does not intersect with the obstacle O_1 , so the configuration is not entangled with respect to the Obstacle-free Linear Homotopy definition (Definition 7). However, the same configuration is entangled with respect to the Obstacle-free Convex Hull definition (Definition 6). In fact, the light-orange shaded area, which corresponds to $\text{conv}(\gamma)$, intersects with O_1 .

B. PROPOSED NON-ENTANGLEMENT DEFINITIONS

The first two proposed non-entanglement definitions focus on some transformation that the tether must be able to achieve in order to be considered not entangled. In the first case, we want that any part of the tether can be made taut without encountering obstacles (i.e., that for any two points $x_1, x_2 \in \gamma$ we have $l_{x_1, x_2} \cap \text{int } \mathcal{O} = \emptyset$). We express this condition by requiring that the convex hull of the tether is obstacle-free.

Definition 6 (Obstacle-free Convex Hull). A tether configuration γ is not entangled if its convex hull does not intersect with any obstacle, i.e., $\text{conv}(\gamma) \cap \text{int } \mathcal{O} = \emptyset$.

In the second definition we require instead that the tether can be continuously retracted to the anchor point by shortening/rewinding the tether without encountering any obstacles in the path.

Definition 7 (Obstacle-free Linear Homotopy). A tether configuration γ is not entangled if the linear homotopic map $H : [0, 1] \times [0, 1] \rightarrow \mathcal{X}$ defined by

$$H(s, t) = (1 - t)\gamma(s) + t x_a \quad (1)$$

does not intersect with the interior of the obstacle region \mathcal{O} , i.e., if

$$l_{\gamma(s), x_a} \cap \text{int } \mathcal{O} = \emptyset, \forall s \in [0, 1].$$

An example of application of the Obstacle-free Convex Hull and Obstacle-free Linear Homotopy non-entanglement definitions (Definition 6 and 7) is shown in Figure 3.

In practice, the Obstacle-free Convex Hull and Obstacle-free Linear Homotopy non-entanglement definitions (Definition 6 and 7) result to be quite conservative in determining if a tether configuration is entangled or not. However, these definitions represent two simple criteria to define a set of non-entangled configurations that can be used as a starting point to define more complex and general non-entanglement definitions.

A less conservative definition is introduced next. This definition determines if a given tether configuration is entangled

or not on the base of the configurations that can be achieved by moving the terminal point of the tether, rather than evaluating the entanglement state of the tether solely based on its current configuration. More specifically, we consider the set of configurations that can be obtained by moving x_r along some path λ belonging to a set $\Lambda_{x_r, P}$. The set $\Lambda_{x_r, P}$ consists of obstacle-free paths (i.e., such that $\lambda \cap \text{int } \mathcal{O} = \emptyset, \forall \lambda \in \Lambda_{x_r, P}$) having their initial point in the current location of the robot (i.e., $\lambda(0) = x_r$), and satisfying some property P . For example, the property P can be defined as the length constraint $\text{maxlen} : \text{len}(\lambda) \leq d_{\text{max}}$, where $d_{\text{max}} > 0$ is the maximum path length.

Definition 8 (Path Homotopy to Safe Set). Let $\Gamma_{x_a}^{\text{safe}}$ be a set of tether configurations that have their initial point at x_a , and which are considered to be safe, and let $\lambda \in \Lambda_{x_r, P}$ be a set of obstacle-free paths along which the robot can move from its current location and that satisfy property P . A tether configuration γ from x_a to x_r is not entangled if there exists a path $\lambda \in \Lambda_{x_r, P}$ and a configuration $\tilde{\gamma} \in \Gamma_{x_a}^{\text{safe}}$ such that γ is relatively homotopic to $\tilde{\gamma}$ along λ , i.e., if $\gamma \sim_{x_a, \lambda} \tilde{\gamma}$.

We remark that the equivalence $\sim_{x_a, \lambda}$ indicates that the two paths $\gamma, \tilde{\gamma}$ must be relatively homotopic along the paths λ and x_a , which means that the initial point of γ and $\tilde{\gamma}$ remains fixed at x_a during the homotopic transformation.

In the Path Homotopy to Safe Set non-entanglement definition, both the sets $\Gamma_{x_a}^{\text{safe}}$ and $\Lambda_{x_r, P}$ can be defined arbitrarily and can be adapted to the specific application, environment, and tethered robotic system being considered. This provides considerable flexibility to this entanglement definition, which can be made more or less conservative in detecting entanglement. For example, the sets $\Gamma_{x_a}^{\text{safe}}$ and $\Lambda_{x_r, P}$ could be defined starting from the dynamic models of the tether and the robot, ensuring that safe tether configurations can actually be reached under the kynodynamical properties of the system. This, however, is at the same time also the main drawback of this definition since, in practice, the proper selection of the sets $\Gamma_{x_a}^{\text{safe}}$ and $\Lambda_{x_r, P}$ requires some knowledge of the properties of the robot and of the environment. An example of application of the Path Homotopy to Safe Set non-entanglement definition is illustrated next.

Example 1. Let $\Gamma_{x_a}^{\text{safe}}$ be the set of all tether configurations having x_a as initial point and satisfying the Obstacle-free Convex Hull non-entanglement definition (Definition 6). Also, for each x_{r_i} , let $\Lambda_{x_{r_i}, \text{maxlen}}$ be the set of obstacle-free straight paths having their initial point in x_{r_i} and satisfying the property $\text{maxlen} : \text{len}(\lambda) \leq d_{\text{max}}$. Figure 4 shows two example tether configurations for which we check the Path Homotopy to Safe Set definition given the sets $\Gamma_{x_a}^{\text{safe}}$ and $\Lambda_{x_r, \text{maxlen}}$ just described. The blue shaded area represents the set of all the points that can be reached through a tether configuration that is not entangled according to Definition 6. The tether configuration γ_1 is not entangled. In fact, the path λ_1 allows to reach the point x_1 , for which there exists a safe non-entangled configuration according to the Obstacle-

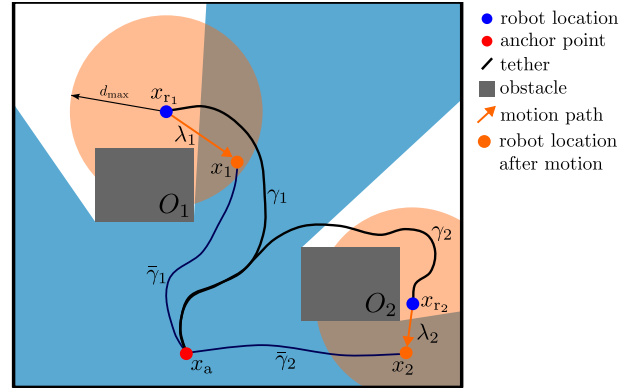


FIGURE 4. Example of the application of the Path Homotopy to Safe Set definition. The set of safe configurations $\Gamma_{x_a}^{\text{safe}}$ is visualized as the set of all points that are reachable through at least one configuration that is not entangled with respect to the Obstacle-free Convex Hull definition (Definition 6), and is represented as the blue shaded area. The sets of paths $\Lambda_{x_{r_i}, \text{maxlen}}, i = 1, 2$ are defined as the sets of all straight line paths starting from $x_{r_i}, i = 1, 2$ and having length less than or equal to d_{max} . The sets $\Lambda_{x_{r_1}, \text{maxlen}}$ and $\Lambda_{x_{r_2}, \text{maxlen}}$ are visualized by the orange shaded areas.

free Convex Hull definition (Definition 6). Most importantly, the non-entangled path $\tilde{\gamma}_1$, which reaches x_1 from x_a and which is not entangled according to the Obstacle-free Convex Hull definition (Definition 6), is relatively homotopic to γ_1 along λ_1 . On the contrary, γ_2 is entangled. In fact, despite the existence of the path λ_2 that goes from x_{r_2} to x_2 , the point x_2 is only reachable from x_a through safe configurations that are not relatively homotopic to γ_2 along λ_2 , e.g., the configuration $\tilde{\gamma}_2$.

One more non-entanglement definition is introduced now. This definition is topology-based and determines the entanglement state of a tether configuration based on the tether location relative to the obstacles, and possibly to the other tethers, present in the environment. This definition has some similarities with Definition 3, as it identifies as entangled tether configurations that go around an obstacle, as in the example of Figure 2. However, this non-entanglement definition improves Definition 3 in two ways, namely, it considers both 2D and 3D environments with general types of obstacles, and it does not rely on the projection of the tether configurations on 2D planes. In this definition we require that, if between two points $x_1, x_2 \in \gamma$ there are no obstacles, i.e., $l_{x_1, x_2} \cap \text{int } \mathcal{O} = \emptyset$, then it must be possible to make the piece of tether between those two points taut without crossing any obstacles, i.e., the piece of tether between x_1, x_2 must be path-homotopic to l_{x_1, x_2} .

Definition 9 (Local Visibility Homotopy). A tether configuration γ is not entangled if, for any pair of points $x_1 = \gamma(s_1), x_2 = \gamma(s_2)$ such that $l_{x_1, x_2} \cap \text{int } \mathcal{O} = \emptyset$, it holds that

$$\gamma_{[s_1, s_2]} \sim l_{x_1, x_2}. \quad (2)$$

An example of application of the Local Visibility Homotopy definition is shown in Figure 5.

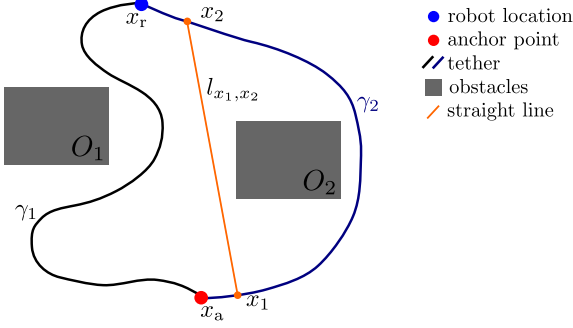


FIGURE 5. Example of the application of the Local Visibility Homotopy non-entanglement definition for two different tether configurations. Configuration γ_1 is not entangled. On the contrary, γ_2 is entangled. In fact, the part of the path γ_2 between x_1 and x_2 is not homotopic to the straight line l_{x_1, x_2} between the points x_1 and x_2 due to the presence of obstacle O_2 .

We remark that for 3D multi-robot scenarios, the Local Visibility Homotopy non-entanglement definition (Definition 9) does not always identify as entangled tether configurations that go around the tether of another robot. In fact, when the tether of another robot does not form a loop, there always exists a homotopy between a curve $\gamma_{[s_1, s_2]}$ and the corresponding straight-line segment l_{x_1, x_2} . A possible solution for this is to require that the homotopic Fréchet distance between the curves $\gamma_{[s_1, s_2]}$ and l_{x_1, x_2} is equal to or less than some value β , i.e., $\bar{\mathcal{F}}(\gamma_{[s_1, s_2]}, l_{x_1, x_2}) \leq \beta$. A possible choice for the value of β is $\beta = \text{len}(\gamma_{[s_1, s_2]})$.

C. RELAXATION OF THE NON-ENTANGLEMENT CONSTRAINTS

In this section we introduce a relaxation of the non-entanglement definitions proposed up to this point, in order to make them less conservative in the detection of entanglement. Given a tether configuration that is not entangled according to one of the non-entanglement definitions, we observe that a small variation in the configuration can lead to it being identified as entangled, as shown in the example depicted in Figure 6 for the Local Visibility Homotopy non-entanglement definition (Definition 9). In many applications, limited violations of the non-entanglement constraints can be considered acceptable, as they do not immediately harm the mobility of a tethered robot. For this reason, it may be desirable to make the non-entanglement definitions less conservative, allowing a certain amount of violation of the constraint.

To achieve this, we introduce a δ -relaxed version of the non-entanglement definitions, which, given a tether configuration γ that is not entangled according to the original definition, considers as not entangled any tether configuration γ' that is path-homotopic to γ and is δ -close to γ . The closeness between the two tether configurations γ and γ' is measured using the homotopic Fréchet distance.

Definition 10 (δ -Relaxed Non-Entanglement Definition d). A tether configuration γ is considered to be not entangled if there exists a tether configuration γ' such that:

- i) γ' is not entangled according to Definition d ;

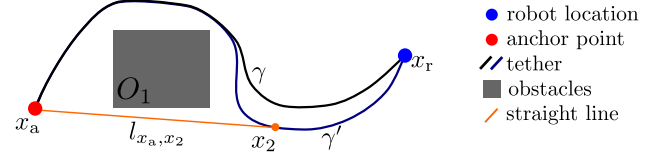


FIGURE 6. An example of the sensitivity of the Local Visibility Homotopy non-entanglement definition (Definition 9) to variations in the tether configuration. Configuration γ is not entangled with respect to the definition. On the contrary, configuration γ' (which is identical to γ everywhere except for the variation above obstacle O_1) is entangled, as the straight line l_{x_a, x_2} is not homotopic to γ'_{x_a, x_2} .

- ii) $\gamma \sim \gamma'$;
- iii) $\bar{\mathcal{F}}(\gamma, \gamma') \leq \delta$;

where $\delta \in [0, \infty]$ is the maximum value that the homotopic Fréchet distance between γ and the target tether configuration γ' can have.

The value of δ can be arbitrarily chosen and determines the allowed amount of violation of the non-entanglement constraint of a given definition before a tether configuration is considered to be entangled. We provide now an example of relaxation of a non-entanglement constraint. In particular, we discuss the ∞ -relaxation of the Local Visibility Homotopy non-entanglement definition (Definition 9). We remark that, by choosing $\delta = \infty$, we are effectively removing condition iii) from Definition 10, resulting in the following definition.

Definition 11 (Path Class-Relaxed Local Visibility Homotopy). A tether configuration γ is not entangled if there exists a tether configuration $\gamma' \in \Gamma_{x_a, x_r}$ such that:

- i) γ' is not entangled according to Definition 9;
- ii) $\gamma' \sim \gamma$.

We choose to analyze this specific relaxation because, as will become more clear in Section VI during the comparison of the definitions, the Path Class-Relaxed Local Visibility Homotopy definition generalizes well many of the other definitions. As we show in Section VI, if a tether configuration is entangled according to this definition, then it is also entangled according to many of the other definitions.

The Path Class-Relaxed Local Visibility Homotopy non-entanglement definition extends the non-entanglement property from a path γ to the path homotopy class $[\gamma]$, i.e., if a path γ is not entangled according to the Local Visibility Homotopy definition (Definition 9), then any path γ' such that $[\gamma'] = [\gamma]$ is also not entangled. This means that, in the Path Class-Relaxed Local Visibility Homotopy non-entanglement definition the entanglement state of a tether does not depend on the specific tether configuration, but on the path homotopy class in which it lies. For example, in a scenario such as the one depicted in Figure 6 both configurations would be considered not entangled since they belong to the same path homotopy class.

V. CHARACTERIZATION OF THE FREE WORKSPACE UNDER THE NON-ENTANGLEMENT DEFINITIONS

In this section, we characterize the part of the free workspace that is reachable by a tethered robot under the different entanglement definitions. In fact, given a non-entanglement definition, in general only a subset of the workspace can be reached through a non-entangled tether configuration. This effectively limits the part of the free workspace in which a tethered robot can move without getting its tether entangled. Knowing this restriction is useful during the development of entanglement-free motion planning algorithms for tethered robots. The proofs of the results presented in this section are reported in Appendices B.

Given a free workspace $\mathcal{X}_{\text{free}}$, an anchor point location x_a , and a non-entanglement definition d , we find that in general only a subset of the points of $\mathcal{X}_{\text{free}}$ can be reached through a non-entangled tether configuration. We call this set the *non-entangled free workspace*, and define it as

$$\mathcal{N}_{x_a,d} = \{x : \exists \gamma \in \Gamma_{x_a,x_r}, \text{ s.t. } \gamma \text{ is not entangled under Definition } d\}.$$

We start the characterization of the non-entangled free workspace from the non-entanglement definitions found in the literature, i.e., Definitions 1 – 5. We note that for Definition 3 the non-entangled free workspace is not computed, since the set $\mathcal{N}_{x_a,3}$ depends on the tether configurations of the other robots, and not just on $\mathcal{X}_{\text{free}}$ and x_a . We also observe that $\mathcal{N}_{x_a,5} = \{x_a\}$, since in Definition 5 only closed tether configurations are considered, i.e., where $x_r = x_a$. For Definitions 1 and 2 the sets $\mathcal{N}_{x_a,1}$ and $\mathcal{N}_{x_a,2}$ are straightforward to find.

Proposition 1. The sets $\mathcal{N}_{x_a,1}$ and $\mathcal{N}_{x_a,2}$ coincide, and they are equal to the set of points that can be reached from x_a through a straight line segment that does not intersect with any obstacle, i.e., $\mathcal{N}_{x_a,1} = \mathcal{N}_{x_a,2} = \{x : \exists l_{x,x_a}, l_{x,x_a} \cap \text{int } \mathcal{O} = \emptyset\}$.

For Definition 4 we show instead that all points in $\mathcal{X}_{\text{free}}$ are part of the non-entangled free workspace.

Proposition 2. The non-entangled free workspace for the 2D Tether Loop around Obstacle non-entanglement definition (Definition 4) is given by $\mathcal{N}_{x_a,4} = \mathcal{X}_{\text{free}}$.

We move now to the study of the set $\mathcal{N}_{x_a,d}$ for the proposed non-entanglement definitions. We start by observing that the sets $\mathcal{N}_{x_a,6}$ and $\mathcal{N}_{x_a,7}$ coincide, and that they are the same as the non-entangled workspace of Definitions 1 and 2 that was characterized in Proposition 1.

Proposition 3. The sets $\mathcal{N}_{x_a,6}$ and $\mathcal{N}_{x_a,7}$ coincide, and they are equal to the set of points that can be reached from x_a through a straight line segment that does not intersect with any obstacle, i.e., $\mathcal{N}_{x_a,6} = \mathcal{N}_{x_a,7} = \{x : \exists l_{x,x_a}, l_{x,x_a} \cap \text{int } \mathcal{O} = \emptyset\}$.

This result, despite its simplicity, highlights well the strictness of the Obstacle-free Convex Hull and the Obstacle-free Linear Homotopy non-entanglement definitions (Definitions 6 and 7). In fact, Proposition 3 shows how these definitions

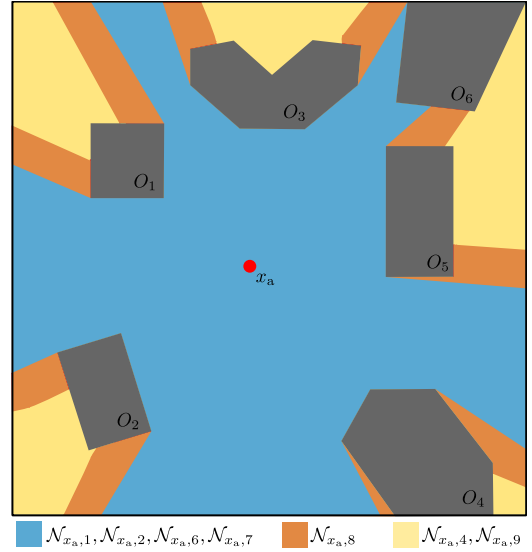


FIGURE 7. Comparison of the non-entangled free workspace $\mathcal{N}_{x_a,d}$ for the Definitions 1, 2, 4, and 6–9. All the sets are computed starting from the anchor point x_a shown in the middle of the image. The sets $\mathcal{N}_{x_a,1}$, $\mathcal{N}_{x_a,2}$, $\mathcal{N}_{x_a,6}$, and $\mathcal{N}_{x_a,7}$ correspond to all the points that are in an obstacle-free line of sight with x_a . To compute the set $\mathcal{N}_{x_a,8}$, the set $\Gamma_{x_a}^{\text{safe}}$ is defined as the set of tether configurations that are not entangled with respect to the Obstacle-Free Linear Homotopy definition (Definition 7), and the set $\Lambda_{x_r,p}$ is defined as the set of all paths such that $\text{len}(\lambda) \leq d_{\text{max}}$. The sets $\mathcal{N}_{x_a,4}$ and $\mathcal{N}_{x_a,9}$ cover the whole $\mathcal{X}_{\text{free}}$.

do not allow the tether to go around obstacles, since in both definitions each point of the tether must always be in the line of sight of the anchor point.

Moving onto the Path Homotopy to Safe Set definition (Definition 8), we observe that the set $\mathcal{N}_{x_a,8}$ can be computed by extending the analysis described in Example 1 for the two points x_{r1}, x_{r2} to all the points in $\mathcal{X}_{\text{free}}$. To check if a point $x_r \in \mathcal{X}_{\text{free}}$ belongs to $\mathcal{N}_{x_a,8}$ it is necessary to determine if there exists a tether configuration γ for which it is possible to find a path $\lambda \in \Lambda_{x_r,p}$ and a safe configuration $\bar{\gamma} \in \Gamma_{x_a}^{\text{safe}}$ such that γ is relatively homotopic to $\bar{\gamma}$ along λ , i.e., $\mathcal{N}_{x_a,8} = \{x_r : \exists \bar{\gamma} \in \Gamma_{x_a}^{\text{safe}}, \lambda \in \Lambda_{x_r,p} \text{ s.t. } (\bar{\gamma} \diamond \lambda^{\text{reverse}})(1) = x_r\}$. In general, $\mathcal{N}_{x_a,8}$ cannot be characterized more explicitly, as it depends on the specific choice of the sets $\Gamma_{x_a}^{\text{safe}}$ and $\Lambda_{x_r,p}$.

Lastly, for the Local Visibility Homotopy non-entanglement definition (Definition 9) we show that, given an anchor point x_a , every point $x \in \mathcal{X}_{\text{free}}$ is reachable through at least one non-entangled tether configuration.

Proposition 4. The non-entangled free workspace for the Local Visibility Homotopy non-entanglement definition is given by $\mathcal{N}_{x_a,9} = \mathcal{X}_{\text{free}}$.

To conclude this section, we compare the non-entangled free workspace for the different definitions. In the comparison below, for the Path Homotopy to Safe Set (Definition 8) we define the set $\Gamma_{x_a}^{\text{safe}}$ as the set of tether configurations starting from x_a that are not entangled with respect to the Obstacle-Free Linear Homotopy definition (Definition 7), and the set $\Lambda_{x_r,\text{maxlen}}$ is defined as the set of all paths starting from x_r

having length less than or equal to some d_{\max} . We obtain then the following relations

$$\mathcal{N}_{x_a,1} = \mathcal{N}_{x_a,2} = \mathcal{N}_{x_a,6} = \mathcal{N}_{x_a,7} \subseteq \mathcal{N}_{x_a,8} \subseteq \mathcal{N}_{x_a,4} = \mathcal{N}_{x_a,9}.$$

We also observe that, in case of an obstacle-free workspace all the sets coincide. An example of the non-entangled workspace for the different definitions is shown in Figure 7.

VI. RELATIONSHIPS BETWEEN THE DEFINITIONS

In Section IV a broad set of non-entanglement definitions has been introduced and discussed. There exist a number of relationships between the different definitions. We are specifically interested in determining if a definition is a special case of another one, i.e., if being entangled with respect to one definition implies being entangled also with respect to another one. It is worth noting that some of the definitions can only be applied under specific environment and tether conditions. These conditions are the following:

- C1. Taut tether configuration;
- C2. Multi-robot system;
- C3. Obstacle-free environment;
- C4. 2D environment;
- C5. Closed tether configuration (coinciding endpoints).

The definitions that require specific types of tether configurations and environments are summarized below:

Definition 1: C1

Definition 2: C1, C2, C3

Definition 3: C2

Definition 4: C4

Definition 5: C5

Definitions not listed here can handle generic tether configurations and environments.

Table 1 summarizes all the relationships between the different definitions. In the table, a cross indicates that being not entangled with respect to the definition on a given row implies being not entangled also with respect to the definition in the corresponding column (and, conversely, that being entangled with respect to the definition in a given column implies being entangled also with respect to the definition in the corresponding row). When a relationship exists between two definitions, we assume that the conditions required by the two definitions, which are indicated in Table 1 next to the number of each definition, are simultaneously satisfied. Some of the crosses have additional conditions indicated by a superscript, which means that the relationship between the two definitions is true if those additional conditions hold. The proofs of the relationships listed in Table 1 are reported in Appendix C.

From the analysis of Table 1 it is possible to gain an intuition of which non-entanglement definitions are more strict and which are less so in identifying a tether configuration as non-entangled. The definitions that imply non-entanglement also according to many other definitions (i.e., those whose corresponding row contain many crosses) are typically more strict. For instance, Definition 1 considers a

tether configuration as non-entangled only if it coincides with a straight line segment, which is also considered to be a non-entangled configuration by most of the other definitions. A similar argument also holds for Definitions 2 and 6. On the contrary, definitions according to which non-entanglement is also implied by many others are usually more general. This is the case of Definitions 4 and 5, which generalize most of the other definitions in their specific cases of application (respectively, 2D environments and closed tether configurations). Definition 11 also turns out to generalize most of the other definitions.

We remark that the way in which the Path to Safe Homotopy definition (Definition 8) is related to other definitions depends on the specific choice of $\Gamma_{x_a}^{\text{safe}}$ and $\Lambda_{x_r,p}$. For this reason, no relationship has been marked in the table for Definition 8. The same holds for the δ -Relaxed Non-Entanglement definition (Definition 10), as the relations of Definition 10 depend on the specific choice of δ and d .

VII. EMPIRICAL VALIDATION

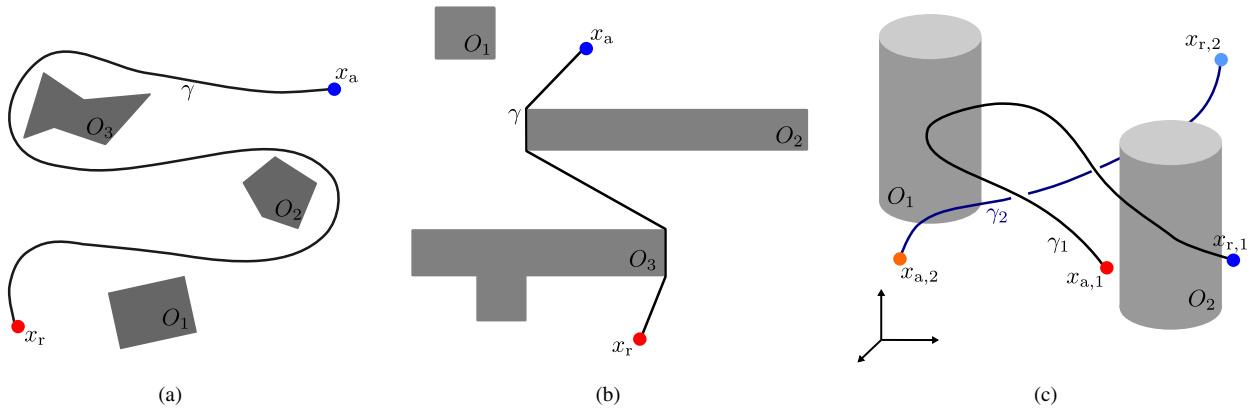
The non-entanglement definitions presented in this article are intended to be applied in tethered robot systems to characterize the entanglement state of the tether. However, the definitions are not straightforward to validate since, as already discussed, there is not a well-established and generally accepted definition of entanglement to compare them with. For this reason, we have opted for a qualitative validation of the definitions by experts in the field of tethered robotics. A total of 12 experts from the field of tethered robotics (mostly from the field of underwater tethered robotics), have been asked to evaluate a set of test scenarios. Each scenario is composed by a set of obstacles, an anchor point x_a , a robot location x_r , and a tether configuration γ . The considered scenarios include both 2D and 3D environments, single-robot and multi-robot systems, and both loose and taut tether configurations. Three examples of test scenarios are shown in Figure 8. The full list of validation scenarios can be found in the supplemental material to this article.

All the non-entanglement definitions discussed in this article are applied to each scenario to determine the entanglement state of the tether.¹² The experts performed the same operation by indicating, for each scenario, if they would consider the tether configuration to be entangled or not. In addition to indicating if a tether configuration is entangled or not, the experts had the possibility to indicate the extent on the entanglement in that given scenario. The four possible answers that the experts could select are ‘N’ (not entangled), ‘W’ (weakly entangled), ‘E’ (entangled), and ‘S’ (strongly entangled). The non-entanglement definitions can produce instead three different outcomes: ‘N’ (not entangled), ‘E’ (entangled), and ‘-’

¹²For Definition 8 the set $\Gamma_{x_a}^{\text{safe}}$ is defined as the set of all the tether configurations that are not entangled according to Definition 6, while $\Lambda_{x_r,\text{maxlen}}$ is defined as the set of all obstacle-free straight paths starting from x_r and having length less than or equal to some d_{\max} , as done e.g. in Example 1. In 3D multi-robot scenarios, Definitions 9 and 11 have been considered under the requirement that $\mathcal{F}(\gamma_{[s_1,s_2]}, l_{x_1,x_2}) \leq \text{len}(\gamma_{[s_1,s_2]})$, which was discussed at the end of Section IV-B.

TABLE 1. Comparison of the Entanglement Definitions.

	1. Taut Tether Contact with Obstacle (C1)	2. Taut Tether Contact with Other Tethers (C1, C2, C3)	3. Entanglement between Slack Tethers (C2)	4. 2D Tether Loop around Obstacle (C4)	5. Closed Tether Homotopy to Constant Map (C5)	6. Obstacle-Free Convex Hull	7. Obstacle-Free Linear Homotopy	8. Path Homotopy to Safe Set	9. Local Visibility Homotopy	10. δ -Relaxed Non-Entanglement Definition d	11. Path Class Robustified Local Visibility Homotopy
1. Taut Tether Contact with Obstacle (C1)	X			X	X	X			X		X
2. Taut Tether Contact with Other Tethers (C1, C2, C3)	X	X	X	X	X	X	X		X		X
3. Entanglement between Slack Tethers (C2)			X								
4. 2D Tether Loop around Obstacle (C4)				X	X						X ^(C5)
5. Closed Tether Homotopy to Constant Map (C5)				X	X						X
6. Obstacle-Free Convex Hull	X			X	X	X	X		X		X
7. Obstacle-Free Linear Homotopy				X	X		X				X
8. Path Homotopy to Safe Set								X			
9. Local Visibility Homotopy				X	X				X		X
10. δ -Relaxed Non-Entanglement Definition d										X	
11. Path Class Robustified Local Visibility Homotopy											X

**FIGURE 8.** Three examples of validation scenarios used for the empirical validation of the binary non-entanglement definitions. In the figures, gray regions O_i represent the obstacles, the blue dot x_a indicates the anchor point location, the red dot x_r indicates the robot location, and the black curve γ represents the tether configuration under analysis. Scenarios (a) and (b) are 2D and single-robot. Scenario (c) is 3D and multi-robot.

(definition not applicable, e.g., when the conditions required by a certain definition are not satisfied in the scenario under analysis). The results of the validation process are shown in Table 2.

By observing the left-hand part of the table, where the opinions of the experts are reported, it is easy to note that the evaluations of the test scenarios by the experts are often very different from each other. In fact, some of the experts

TABLE 2. Validation of the entanglement definitions. N: not entangled; W: weakly entangled; E: entangled; S: strongly entangled; -: not applicable.

Scenario	Expert												Definition										
	1	2	3	4	5	6	7	8	9	10	11	12	1	2	3	4	5	6	7	8	9	11	
A1	N	N	N	N	N	N	N	N	N	N	N	N	-	-	-	N	-	E	E	N	E	N	
A2	N	N	N	N	N	N	N	W	N	N	N	N	-	-	-	N	-	E	E	N	N	N	
A3	N	N	N	N	E	N	N	N	N	E	N	N	-	-	-	N	-	E	E	N	N	N	
A4	N	N	N	N	N	N	N	N	N	N	N	N	-	-	-	N	-	E	E	N	N	N	
B1	N	N	N	N	N	N	E	N	N	N	N	N	-	-	-	N	-	E	E	N	N	N	
B2	N	N	N	N	N	N	W	N	N	N	N	N	-	-	-	N	-	E	E	E	E	E	
B3	N	N	N	N	N	N	N	N	N	N	N	N	-	-	-	N	-	E	E	E	E	E	
B4	N	N	N	N	N	N	N	N	N	N	N	W	-	-	-	N	-	E	E	N	E	N	
B5	N	N	N	N	N	N	N	N	N	N	N	N	-	-	-	N	-	E	E	N	E	N	
B6	N	N	N	N	N	N	N	N	N	N	N	W	-	-	-	N	-	E	E	N	E	N	
C1	N	N	W	N	N	N	E	W	N	E	W	W	-	-	-	N	-	E	E	E	E	E	
C2	E	W	E	W	S	W	S	E	E	S	E	S	-	-	-	E	-	E	E	E	E	E	
D1	W	N	S	N	E	N	S	W	W	E	E	W	E	-	-	N	-	E	E	E	N	N	
D2	N	N	N	N	N	N	W	N	N	W	N	N	-	-	-	N	-	E	E	E	N	N	
D3	E	N	W	N	W	N	S	W	W	E	E	W	E	-	-	N	-	E	E	E	N	N	
D4	E	N	W	N	W	N	S	W	W	E	E	W	E	-	-	N	-	E	E	E	N	N	
E1	N	N	N	N	N	N	W	N	N	N	N	N	-	-	-	N	-	E	E	N	N	N	
E2	E	N	W	N	W	N	S	W	W	E	E	W	E	-	-	N	-	E	E	E	E	E	
E3	N	N	N	N	N	N	W	N	N	N	N	N	-	-	-	N	-	E	E	E	E	E	
E4	N	N	N	N	E	N	N	N	N	E	N	N	-	-	-	N	-	E	E	N	N	N	
F1	N	N	N	N	N	N	N	N	N	N	N	N	-	-	-	N	-	E	E	N	N	N	
F2	N	N	N	N	N	N	N	N	N	N	N	N	-	-	-	N	-	E	E	N	E	N	
F3	N	N	N	N	N	N	N	N	N	N	N	N	-	-	-	N	-	E	E	N	N	N	
F4	N	N	N	N	N	N	W	N	N	W	N	N	-	-	-	N	-	E	E	E	E	E	
G1	N	N	N	N	N	N	N	N	N	E	W	W	-	-	-	N	-	E	E	E	N	N	
G2	N	N	N	N	E	N	N	N	N	E	W	W	-	-	-	N	-	E	E	E	N	N	
H1	E	N	E	N	W	N	S	W	W	E	E	W	E	-	-	N	-	E	E	E	N	N	
H2	N	N	N	N	N	N	E	N	N	N	N	N	-	-	-	N	-	E	E	E	E	N	
I1	N	N	N	N	N	N	W	N	N	N	N	N	-	-	-	N	-	E	E	E	E	E	
I2	N	N	N	N	N	N	N	N	N	N	N	N	-	-	-	N	-	E	E	E	E	E	
I3	E	N	N	N	W	N	S	N	N	E	N	E	-	-	-	N	-	E	E	E	E	E	
I4	N	N	N	N	N	N	N	N	N	N	N	N	-	-	-	N	-	N	N	N	N	N	
I5	N	N	N	N	N	N	N	N	N	N	N	N	-	-	-	N	-	E	E	N	N	N	
I6	N	N	W	N	W	N	E	W	N	W	W	W	-	-	-	N	-	E	E	N	E	E	
L1	N	N	N	N	N	N	N	N	N	N	N	N	-	-	-	N	-	E	E	E	N	N	
L2	N	N	N	N	N	N	N	N	N	N	N	N	-	-	-	N	-	E	N	N	N	N	
L3	N	N	N	N	N	N	N	N	N	N	N	N	-	-	-	N	-	E	E	N	N	N	
L4	N	N	N	N	E	N	N	N	N	E	N	W	-	-	-	E	-	E	E	E	E	E	
M1	W	N	N	N	W	N	N	W	N	N	N	W	-	-	-	N	-	E	N	E	N	N	
M2	N	N	N	N	E	N	N	N	N	N	N	N	-	-	-	N	-	N	N	N	N	N	
M3	N	N	E	N	S	W	E	E	W	W	E	E	-	-	-	E	-	E	E	E	E	E	
M4	E	N	W	N	S	W	E	E	W	W	E	E	-	-	-	E	-	E	E	E	E	E	
M5	E	N	N	N	S	N	N	W	N	N	N	W	-	-	-	E	-	N	N	N	N	N	
M6	E	N	W	W	S	W	E	E	W	E	E	W	-	-	-	E	-	E	E	E	E	E	
N1	N	W	N	N	N	N	E	N	N	N	N	N	-	-	-	N	-	E	E	E	N	N	
N2	N	W	N	N	N	N	S	W	N	E	W	W	-	-	-	N	-	E	E	E	N	N	
N3	N	N	N	N	W	W	E	W	N	E	W	W	E	-	-	N	-	E	E	E	N	N	
N4	E	N	W	N	W	W	S	W	W	E	W	W	E	-	-	N	-	E	E	E	E	E	
N5	N	E	N	N	N	N	E	N	N	N	N	W	-	-	-	N	-	E	E	E	E	E	
N6	N	E	W	N	E	E	S	E	E	S	E	W	E	-	-	N	-	E	E	E	N	N	
N7	N	N	W	N	W	W	S	E	W	W	E	N	E	-	-	N	-	E	E	N	N	N	
N8	E	S	E	W	S	E	S	E	N	S	S	E	-	-	-	N	-	E	E	E	E	E	
N9	N	N	N	N	N	N	N	N	N	N	W	N	-	-	-	N	-	N	N	E	N	N	
N10	N	N	N	N	N	W	W	W	N	N	N	W	-	-	-	N	-	E	E	E	E	N	
O1	N	N	N	N	N	N	N	N	N	N	N	N	-	-	-	N	-	N	N	N	N	N	
O2	E	W	W	S	S	E	S	E	N	S	E	E	-	-	-	E	-	E	E	E	E	E	
O3	N	N	N	N	N	N	N	N	N	N	N	N	-	-	-	N	-	E	E	E	E	N	
O4	E	W	N	S	E	S	E	E	N	S	E	E	-	-	-	E	-	E	E	E	E	E	
O5	E	N	N	S	S	S	W	E	N	S	E	S	-	-	-	E	-	E	E	E	E	E	
O6	N	N	N	N	N	N	N	N	N	N	N	N	-	-	-	N	-	E	E	E	N	N	
P1	N	N	N	N	N	N	N	N	N	N	N	N	-	-	-	E	-	E	E	N	N	N	
P2	E	W	W	E	E	E	S	W	E	S	E	E	-	-	-	E	-	E	E	E	E	E	
P3	S	E	E	S	S	E	S	W	E	S	S	S	-	-	-	E	-	E	E	E	E	E	
P4	E	W	N	W	E	E	S	W	N	S	E	E	-	-	-	N	-	E	E	E	E	E	
P5	E	W	N	E	E	E	E	W	N	S	E	E	-	-	-	E	-	E	E	E	E	E	
P6	S	E	W	S	E	E	S	W	N	S	S	W	-	-	-	E	-	E	E	E	E	E	
P7	N	E	N	E	W	E	N	N	N	E	E	E	-	-	-	E	-	E	E	E	E	N	
P8	E	S	S	S	S	S	S	E	W	S	S	S	-	-	-	E	-	E	E	E	E	E	

tend to classify tether configurations as entangled more often than others, which indicates that their own definition of entanglement is more conservative than that of others. On the other hand, some experts only indicate a few scenarios as entangled (e.g., experts 2 and 4). The right-hand side of the table shows the results of the application of the non-entanglement definitions to the test scenarios. Here it is possible to observe how the definitions differ in the evaluation of the scenarios, with some definitions being more conservative than others. By comparing the two parts of the table, one can observe which definitions result to be closer to the opinions of the experts. Definitions 1, 3, and 5, for instance, coincide almost always with the average opinion from the experts. However, these definitions need specific conditions to be satisfied, and can only be applied to a limited number of the test scenarios. On the contrary, the new definitions proposed in this work (Definitions 6–9 and 11) can be applied to all the test scenarios. It can also be noted, as already observed in Section V, that Definitions 6 and 7 are quite conservative in evaluating entanglement, but also that they provide a good definition of a safe set for Definition 8, which results instead to be closer to the opinion of the experts. Definitions 9 and 11 often coincide with the average opinion of the experts, with Definition 11 being the closest one.

VIII. CONCLUSIONS

We have considered the problem of defining tether entanglement for tethered robots, in order to determine if a tether configuration is entangled or not. We have reviewed the entanglement definitions available in the literature and proposed several new entanglement definitions. All these definitions can be used to evaluate the entanglement state of a tether configuration. We have discussed the properties of the different definitions, highlighting their individual strengths and weaknesses, and analyzed the relationships between them. In particular, the comparison of the definitions shows how some of the newly proposed definitions generalize many of the definitions existing in the literature, resulting in more comprehensive definitions of entanglement.

The main direction for future work regards the integration of the proposed definitions in motion planning algorithms for tethered robots, with the goal of obtaining safer and more robust trajectories. This entails the development of general motion planning algorithms for tethered robots that can make use of different entanglement definitions, that are robust to uncertainties in the localization of the tether and the obstacles, and that are able to find disentangling paths in case a robot has an entangled tether. The definitions can be used, for example, to introduce a non-entanglement constraint in trajectory planning algorithms, which, paired with a dynamic model of the tether that allows to estimate its movement, enables the robot to avoid motion trajectories that would lead the tether to get entangled. Alternatively, the definitions can be used offline for the computation of a set of robot locations for which the tether is guaranteed to be not entangled. This set can then be used as a domain for an online motion planning algorithm,

which is able to avoid entanglement by keeping the robot within the set.

A second important open research direction is the development of *continuous* entanglement definitions based on the measure of a level of entanglement. By using this type of entanglement definitions, a set of tether configurations can be ordered relatively to each other depending on their level of entanglement. This type of definition can find application in entanglement-aware motion planning algorithms for tethered robots that focus on keeping the tether at a minimum level of entanglement, that is, that focus on optimizing the risk/safety level of the tethered robot. For example, in the motion planning problem depicted in Figure 1, a continuous entanglement definition can provide a way to rank the possible motion paths depending on the level of entanglement of the tether configurations resulting from the motion of the robot along those paths.

Finally, we aim to expand the validation of the entanglement definitions, by considering both more scenarios, and a larger and more diverse set of experts. An extended validation, coupled with the application of the entanglement definitions to motion planning algorithms, will allow to determine the effectiveness of the definitions in real-world tethered robotic systems. Other open issues include the integration of self-knotting in the entanglement definitions, which is an unwanted condition that none of the existing definitions captures effectively. Self-knotting occurs in 3D when a tether passes through a loop or ‘eyelet’ created by itself, and can lead to critical entanglement scenarios.

APPENDIX A. PROOFS OF SECTIONS IV AND V

In this appendix we provide some technical results that have been used in Sections III and IV.

Lemma 1 ([48], p.25). Given a convex subset of $\mathcal{Y} \subseteq \mathbb{R}^n$, all paths in \mathcal{Y} with given endpoints x_1 and x_2 are path-homotopic to each other.

Lemma 2 (Path homotopy in loops). Let \mathcal{Y} be a path-connected space, and $\gamma : [0, 1] \rightarrow \mathcal{Y}$ be a loop, i.e., a path such that $\gamma(0) = \gamma(1) = x_0$, that is path-homotopic to its base point x_0 . Then for any two paths γ_1, γ_2 such that $\gamma_1 \diamond \gamma_2^{\text{reverse}} = \gamma$, it holds that $\gamma_1 \sim \gamma_2$.

Proof. Let $x_1 = \gamma_1(0) = \gamma_2(0)$ and $x_2 = \gamma_1(1) = \gamma_2(1)$. Since \mathcal{Y} is path-connected, γ is path-homotopic to any of its points, which implies that $\gamma \sim x_1$ and $\gamma \sim x_2$. By using elementary properties of how path homotopy is preserved under path concatenation [52, Theorem 7.11] we have $\gamma_1 \sim \gamma_1 \diamond x_2 \sim \gamma_1 \diamond (\gamma_2^{\text{reverse}} \diamond \gamma_2) \sim (\gamma_1 \diamond \gamma_2^{\text{reverse}}) \diamond \gamma_2 \sim x_1 \diamond \gamma_2 \sim \gamma_2$, i.e., $\gamma_1 \sim \gamma_2$. \square

Lemma 3 (Existence of shortest path). Given any two points $x_1, x_2 \in \mathcal{X}_{\text{free}}$ there exists a shortest admissible path γ^* between those two points, where $\gamma^* \in \arg \min_{\gamma \in \Gamma_{x_1, x_2}} [\text{len}(\gamma)]$.

Proof. The free space $\mathcal{X}_{\text{free}}$ is a *boundedly compact metric space*, i.e., all closed bounded sets in it are compact [51,

Definition 1.6.7], since it is a closed subset of \mathbb{R}^n . Therefore, by [51, Corollary 2.5.20] there exists a shortest path between any two path-connected points in $\mathcal{X}_{\text{free}}$. \square

Next, we formalize the *homotopy signature*, which is a topological invariant that uniquely identifies the homotopy equivalence class of any path $\gamma \in \Gamma_{x_a, x_r}$. Given a path γ , its signature is indicated as $\mathfrak{h}(\gamma)$. A signature is a *word* generated as the free product of a finite set of letters [53]. All paths belonging to the same homotopy class have the same signature. Several approaches are available for the identification of homotopy classes through the use of signatures, both in two and three dimensions [41], [57], [58]. We largely base our definition of homotopy signature on [53]. In the following we refer to a continuous mapping $\beta : I \rightarrow \mathcal{X}_{\text{free}}$, where $I \subset \mathbb{R}$ is an interval, as a *continuous curve*.

Definition (Transversality). In \mathbb{R}^2 , a path γ and a curve ζ are said to be transversal if at every point of intersection between them they have distinct tangents [59].

Definition (Complete invariant [60]). A function \mathfrak{h} from Γ_{x_1, x_2} to the set $\Gamma_{x_1, x_2} / \sim$ is called a complete homotopy invariant if

$$\mathfrak{h}(\gamma_1) = \mathfrak{h}(\gamma_2) \iff \gamma_1 \sim \gamma_2.$$

Construction 1 (Signature of a path). Given a 2-dimensional manifold $\mathcal{X}_{\text{free}}$, let $\zeta_1, \zeta_2, \dots, \zeta_p$ be continuous curves, called *representative curves*, such that $\partial\zeta_i \subseteq \partial\mathcal{X}_{\text{free}}$.¹³ Then, for any two fixed points x_a, x_r , given a path γ connecting x_a and x_r that is in general position (transverse) with respect to the ζ_i , and that crosses the ζ_i a finite number of times, it is possible to construct a word by following the path from the start to the end and inserting in the word the letter z_i or z_i^{-1} whenever the path intersects the curve ζ_i with positive or negative orientation respectively. By deleting any string of the type $z_i z_i^{-1}$ and $z_i^{-1} z_i$ we obtain a *reduced word*.

Proposition 5 (Signature is a complete invariant). Reduced words constructed as described in Construction 1 are complete homotopy invariants for paths in $\mathcal{X}_{\text{free}}$ joining two given points x_a and x_r if the following conditions hold:

- i) $\zeta_i \cap \zeta_j = \emptyset, \forall i \neq j$;
- ii) $\mathcal{X}_{\text{free}} \setminus \bigcup_{i=1}^p \zeta_i$ is path-connected and simply connected;
- iii) $\pi_1(\mathcal{X}_{\text{free}} \setminus \bigcup_{i=1, i \neq j}^p \zeta_i) \cong \mathbb{Z}, \forall j \in \{1, \dots, p\}$,

where \cong indicates a group isomorphism.

Proof. The proof is provided on page 143 of [53]. \square

We call the homotopy invariant obtained from Construction 1 and Proposition 5 *homotopy signature*, and we indicate it with $\mathfrak{h}(\cdot)$.

¹³ ∂ indicates the *boundary of a manifold*, which in case of a curve corresponds to its endpoints. For example, in case of a line segment ζ the boundary $\partial\zeta$ corresponds to the two endpoints of ζ , while if ζ is a ray the boundary corresponds to the initial point of ζ .

APPENDIX B. PROOFS OF SECTION VI

Proof of Proposition 1. The proof of this result is trivial. In fact, Definitions 1 and 2 are only applicable to taut tether configurations, and require the tether to be a straight line segment for it to not be considered entangled. \square

Proof of Proposition 2. In Lemma 3 we have established that, given the topological properties of $\mathcal{X}_{\text{free}}$, there exists a shortest path between any given pair of points x_1, x_2 . Since a shortest path never contains a loop, that means that for any point $x \in \mathcal{X}_{\text{free}}$ there exists a shortest path $\gamma_{x_a, x}^*$ that does not contain a loop, and that therefore is not entangled according to Definition 4. Thus, $\mathcal{N}_{x_a, 4} = \mathcal{X}_{\text{free}}$. \square

Proof of Proposition 3. Proposition 3 states that $\mathcal{N}_{x_a, 6} = \mathcal{N}_{x_a, 7} = \{x : l_{x, x_a} \cap \text{int } \mathcal{O} = \emptyset\}$. Given a point $x \in \mathcal{X}_{\text{free}}$ such that $l_{x_a, x} \cap \text{int } \mathcal{O} = \emptyset$, the path $\gamma = l_{x_a, x}$ from x_a to x is a non-entangled tether configuration with respect to both Definition 6 and Definition 7, and therefore $x \in \mathcal{N}_{x_a, 6}$ and $x \in \mathcal{N}_{x_a, 7}$. Conversely, if there exists a tether configuration from x_a to x with $x \in \mathcal{N}_{x_a, 6}$ or $x \in \mathcal{N}_{x_a, 7}$, then $l_{x_a, x} \cap \text{int } \mathcal{O} = \emptyset$, since $l_{x_a, x}$ is part of $\text{conv}(\gamma)$ in the former case, and of the linear path homotopy defined in (1) in the latter case. It follows that $\mathcal{N}_{x_a, 6} = \mathcal{N}_{x_a, 7} = \{x \in \mathcal{X}_{\text{free}} : l_{x_a, x} \cap \text{int } \mathcal{O} = \emptyset\}$. \square

Lemma 4. Given a pair of fixed points x_1, x_2 , the shortest tether configuration γ_{x_1, x_2}^* always satisfies the Local Visibility Homotopy definition (Definition 9).

Proof (by contradiction). Let γ^* be the shortest path between two points in $\mathcal{X}_{\text{free}}$ and suppose that γ^* is entangled with respect to the Local Visibility Homotopy definition (Definition 9). This means that there exist two points $x_1 = \gamma^*(s_1), x_2 = \gamma^*(s_2)$, such that $l_{x_1, x_2} \not\sim \gamma_{[s_1, s_2]}^*$. Since l_{x_1, x_2} is the shortest path between the two points x_1 and x_2 , and l_{x_1, x_2} and $\gamma_{[s_1, s_2]}^*$ are not homotopic, which means that they cannot coincide, we have $\text{len}(l_{x_1, x_2}) < \text{len}(\gamma_{[s_1, s_2]}^*)$. Therefore, the path γ' that is obtained by replacing $\gamma_{[s_1, s_2]}^*$ by l_{x_1, x_2} in the path γ^* is shorter than γ^* . However, this is a contradiction since γ^* was assumed to be the shortest path between the two points. \square

Proof of Proposition 4. In Lemma 3 we have established that, since $\mathcal{X}_{\text{free}}$ is path connected, there always exists a shortest path between any pair of points in $\mathcal{X}_{\text{free}}$, and therefore also between a point $x \in \mathcal{X}_{\text{free}}$ and x_a . Thus, we obtain from Lemma 4 that between any pair of points in $\mathcal{X}_{\text{free}}$ there exists a tether configuration that is not entangled according to Definition 9. \square

APPENDIX C. PROOFS OF THE COMPARISONS OF THE NON-ENTANGLEMENT DEFINITIONS (SECTION VII)

In this appendix the relationships between the non-entanglement definitions that were introduced in Section VI are proved. The proofs are given in the form ‘Definition d_1 implies Definition d_2 ’ which means ‘if a tether configuration γ is not entangled according to Definition d_1 , then it is also not entangled with respect to Definition d_2 ’. The relationships proven in this sections are visualized in Figure 9. It is worth

noting that only the relationships indicated by a black arrow are proven, while those indicated by the light-grey arrows, which correspond to relationships that can be proven by concatenating other relationships, are not.

Proof of Def. 1 \implies Def. 4. Let γ be a taut tether in a 2D environment that is not entangled according to Definition 1, i.e., such that $\gamma = l_{x_a, x_r}$. Since γ coincides with a straight line segment, it does not contain any loop. This means that $\gamma(s_1) = \gamma(s_2) \iff s_1 = s_2$, and so the condition $\gamma_{[s_1, s_2]} \sim \gamma(s_1)$ of Definition 4 is always satisfied since $\gamma_{[s_1, s_2]} = \gamma(s_1)$. Thus γ is not entangled according to Definition 4. \square

Proof of Def. 1 \implies Def. 6. Let γ be a taut tether configuration that is not entangled according to Definition 1, i.e., such that $\gamma = l_{x_a, x_r}$. By definition, the tether configuration γ lies in $\mathcal{X}_{\text{free}}$, i.e., $\gamma \cap \text{int } \mathcal{O} = \emptyset$. Since in the case of a straight line tether we have $\text{conv}(l_{x_a, x_r}) = l_{x_a, x_r}$, it follows that $\text{conv}(\gamma) \cap \text{int } \mathcal{O} = \emptyset$, which means that the tether is not entangled according to Definition 6. \square

Proof of Def. 1 \implies Def. 9. Let γ be a taut tether configuration that is not entangled according to Definition 1, i.e., such that $\gamma = l_{x_a, x_r}$. For any $s_1, s_2 \in [0, 1], s_1 \leq s_2$, we have $\gamma_{[s_1, s_2]} = l_{\gamma(s_1), \gamma(s_2)}$. It follows that $\gamma_{[s_1, s_2]} \sim l_{\gamma(s_1), \gamma(s_2)}$, which means that γ is not entangled according to Definition 9. \square

Proof of Def. 2 \implies Def. 3. Let \mathcal{I} be a set of robots in a 3D environment, and $\gamma_i, i \in \mathcal{I}$ be a taut tether that is not entangled according to Definition 2, i.e., such that $\gamma_i = l_{x_{a,i}, x_{r,i}}$. Given the properties of the environment, the signature of each tether can be computed on a 2D projection of the environment, as detailed in [6]. For every obstacle $\mathcal{O}_i, i \in \{1, \dots, m\}$ in the environment, a point \hat{x}_i is then selected in its interior and two rays $\zeta_i = \hat{x}_i + sv$ and $\bar{\zeta}_i = \hat{x}_i - sv$ are generated from it, where v is a unit direction vector that is selected at the beginning of this process and used for every obstacle. The rays are added to the set of representative curves that will be used to compute the signature. Then, for every other robot $j \in \mathcal{I} \setminus \{i\}$, a piecewise-linear approximation of the tether is computed (see [6, p. 2791]). Each segment composing this approximation is added to the set of representative curves. Finally, the signature of γ_i is computed. Since the path γ_i coincides with the straight line segment $l_{x_{a,i}, x_{r,i}}$, it cannot intersect with any of the rays or straight line segments more than once. Therefore γ_i is not entangled according to Definition 3. \square

Proof of Def. 2 \implies Def. 4. Same proof as that of Def. 1 \implies Def. 4 for $\gamma_i = l_{x_{a,i}, x_{r,i}}$. \square

Proof of Def. 2 \implies Def. 6. Same proof as that of Def. 1 \implies Def. 6 for $\gamma_i = l_{x_{a,i}, x_{r,i}}$. \square

Proof of Def. 2 \implies Def. 9. Same proof as that of Def. 1 \implies Def. 9 for $\gamma_i = l_{x_{a,i}, x_{r,i}}$. \square

Proof of Def. 4 \implies Def. 5. Let γ be a closed tether configuration that is not entangled according to Definition 4, i.e., such that $\gamma_{[s_1, s_2]} \sim \gamma(s_1), \forall s_1, s_2 \in [0, 1]$ such that

$\gamma(s_1) = \gamma(s_2)$. From this assumption and the fact that γ is closed we have $\gamma_{[0,1]} \sim \gamma(0)$, i.e., $\gamma \sim x_a$. Thus, γ is not entangled according to Definition 5. \square

Proof of Def. 5 \implies Def. 4. Let γ be a 2D closed tether configuration that is not entangled according to Definition 5, i.e., such that $\gamma \sim x_a$. For a 2D closed path γ to be homotopic to a constant map there cannot be any obstacle being encircled by γ [54]. Therefore, in any loop $\gamma_{[s_1, s_2]}$ such that $\gamma(s_1) = \gamma(s_2), s_1 \neq s_2$ there cannot be any obstacle as well. This means that $\gamma_{[s_1, s_2]} \sim \gamma(s_1), \forall s_1, s_2 \in [0, 1]$, and therefore γ is not entangled according to Definition 4. \square

Proof of Def. 5 \implies Def. 11. Let γ be a closed path such that $\gamma(0) = \gamma(1) = x_a$ and $\gamma \sim x_a$. It is straightforward that the constant map x_a satisfies the Local Visibility Homotopy definition (Definition 9). Therefore, there exists a path that is not entangled according to the Local Visibility Homotopy definition and that is in the same path homotopy class as γ . Thus, γ is not entangled according to Definition 11. \square

Proof of Def. 6 \implies Def. 1. Let γ be a taut path that is not entangled with respect to Definition 6, i.e., such that $\text{conv}(\gamma) \cap \text{int } \mathcal{O} = \emptyset$. It is easy to see that the taut path γ must coincide with the straight-line path l_{x_a, x_r} . In fact, any other taut path must contain a bend around some obstacle, which violates the assumption that $\text{conv}(\gamma) \cap \text{int } \mathcal{O} = \emptyset$. Thus, γ is also not entangled with respect to Definition 1. \square

Proof of Def. 6 \implies Def. 4. Let γ be a tether configuration that is not entangled according to Definition 6, i.e., such that $\text{conv}(\gamma) \cap \text{int } \mathcal{O} = \emptyset$. If $\gamma(s_1) \neq \gamma(s_2), \forall s_1, s_2$, then γ is trivially not entangled according to Definition 4. Otherwise, there exist some s_1, s_2 for which $\gamma(s_1) = \gamma(s_2)$. Since $\text{conv}(\gamma_{[s_1, s_2]}) \subseteq \text{conv}(\gamma)$, we have $\text{conv}(\gamma_{[s_1, s_2]}) \cap \text{int } \mathcal{O} = \emptyset, \forall s_1, s_2 \in [0, 1]$. From Lemma 1 applied with $\mathcal{Y} = \text{conv}(\gamma_{[s_1, s_2]})$ it holds that $\gamma_{[s_1, s_2]} \sim \gamma(s_1)$, which means that γ is not entangled according to Definition 4. \square

Proof of Def. 6 \implies Def. 5. Let γ be a closed tether configuration (i.e., such that $\gamma(0) = \gamma(1)$) that is not entangled according to Definition 6, i.e., for which $\text{conv}(\gamma) \cap \text{int } \mathcal{O} = \emptyset$. From Lemma 1 applied with $\mathcal{Y} = \text{conv}(\gamma)$ we have $\gamma \sim \gamma(0)$, thus γ is not entangled according to Definition 5. \square

Proof of Def. 6 \implies Def. 7. Let γ be a tether configuration that is not entangled according to Definition 6, i.e., for which $\text{conv}(\gamma) \cap \text{int } \mathcal{O} = \emptyset$. The straight line segment $l_{\gamma(s), x_a}$ consists of all the convex combinations of the points $\gamma(s)$ and x_a , and therefore belongs to $\text{conv}(\gamma)$. This holds for all the points of γ , i.e., $l_{\gamma(s), x_a} \subseteq \text{conv}(\gamma), \forall s \in [0, 1]$. Since $\text{conv}(\gamma) \cap \text{int } \mathcal{O} = \emptyset$, then also the linear homotopy defined in (1) has empty intersection with the interior of the obstacle region \mathcal{O} , i.e., $H(s, t) \in \mathcal{X}_{\text{free}}, \forall s, t \in [0, 1]$. Thus, γ is also not entangled with respect to Definition 7. \square

Proof of Def. 6 \implies Def. 9. Let γ be a tether configuration that is not entangled according to Definition 6, i.e., for which

- [2] P. McGarey, K. MacTavish, F. Pomerleau, and T. D. Barfoot, "TSLAM: Tethered simultaneous localization and mapping for mobile robots," *The International Journal of Robotics Research*, vol. 36, no. 12, pp. 1363–1386, 2017.
- [3] M. Krishna, J. Bares, and E. Mutschler, "Tethering system design for Dante II," in *Proceedings of International Conference on Robotics and Automation*, vol. 2, 1997, pp. 1100–1105.
- [4] P. McGarey, D. Yoon, T. Tang, F. Pomerleau, and T. D. Barfoot, "Developing and deploying a tethered robot to map extremely steep terrain," *Journal of Field Robotics*, vol. 35, no. 8, pp. 1327–1341, 2018.
- [5] S. McCammon and G. A. Hollinger, "Planning and executing optimal non-entangling paths for tethered underwater vehicles," in *2017 IEEE International Conference on Robotics and Automation (ICRA)*, 2017, pp. 3040–3046.
- [6] M. Cao, K. Cao, S. Yuan, T.-M. Nguyen, and L. Xie, "NEPTUNE: Nonentangling trajectory planning for multiple tethered unmanned vehicles," *IEEE Transactions on Robotics*, vol. 39, no. 4, pp. 2786–2804, 2023.
- [7] K. S. Pratt, R. R. Murphy, J. L. Burke, J. Craighead, C. Griffin, and S. Stover, "Use of tethered small unmanned aerial system at Berkman Plaza II collapse," in *IEEE International Workshop on Safety, Security and Rescue Robotics*, 2008, pp. 134–139.
- [8] S. Martinez-Rozas, D. Alejo, F. Caballero, and L. Merino, "Optimization-based trajectory planning for tethered aerial robots," in *2021 IEEE International Conference on Robotics and Automation (ICRA)*, 2021, pp. 362–368.
- [9] M. Tognon, R. Alami, and B. Siciliano, "Physical human-robot interaction with a tethered aerial vehicle: Application to a force-based human guiding problem," *IEEE Transactions on Robotics*, vol. 37, no. 3, pp. 723–734, 2021.
- [10] M. L. Cosmo and E. C. Lorenzini, "Tethers in space handbook," NASA, Tech. Rep. CR-97-206807, 1997.
- [11] H. Wen, D. P. Jin, and H. Y. Hu, "Advances in dynamics and control of tethered satellite systems," *Acta Mechanica Sinica*, vol. 24, no. 3, pp. 229–241, 2008.
- [12] B. S. Yu, H. Wen, and D. P. Jin, "Review of deployment technology for tethered satellite systems," *Acta Mechanica Sinica*, vol. 34, pp. 754–768, 2018.
- [13] I. Shnaps and E. Rimon, "Online coverage by a tethered autonomous mobile robot in planar unknown environments," *IEEE Transactions on Robotics*, vol. 30, no. 4, pp. 966–974, 2014.
- [14] O. A. Eidsvik and I. Schjølberg, "Time domain modeling of rov umbilical using beam equations," *IFAC-PapersOnLine*, vol. 49, no. 23, pp. 452–457, 2016.
- [15] T. Igarashi and M. Stilman, "Homotopic path planning on manifolds for cabled mobile robots," in *Algorithmic Foundations of Robotics IX*. Springer, 2010, pp. 1–18.
- [16] M. Cao, K. Cao, S. Yuan, K. Liu, Y. W. Wong, and L. Xie, "Path planning for multiple tethered robots using topological braids," in *Robotics: Science and Systems*, 2023.
- [17] D. Shapovalov and G. A. S. Pereira, "Tangle-free exploration with a tethered mobile robot," *Remote Sensing*, vol. 12, no. 23, 3858, 2020.
- [18] S. Hert and V. Lumelsky, "Motion planning in \mathbb{R}^3 for multiple tethered robots," *IEEE Transactions on Robotics and Automation*, vol. 15, no. 4, pp. 623–639, 1999.
- [19] X. Zhang and Q.-C. Pham, "Planning coordinated motions for tethered planar mobile robots," *Robotics and Autonomous Systems*, vol. 118, pp. 189–203, 2019.
- [20] S. Hert and V. Lumelsky, "Planar curve routing for tethered-robot motion planning," *International Journal of Computational Geometry & Applications*, vol. 7, no. 3, pp. 225–252, 1997.
- [21] S. Kim, S. Bhattacharya, and V. Kumar, "Path planning for a tethered mobile robot," in *2014 IEEE International Conference on Robotics and Automation (ICRA)*, 2014, pp. 1132–1139.
- [22] S. Bhattacharya, M. Likhachev, and V. Kumar, "Search-based path planning with homotopy class constraints in 3D," *Proceedings of the AAAI Conference on Artificial Intelligence*, vol. 26, no. 1, pp. 2097–2099, 2021.
- [23] P. Brass, I. Vigan, and N. Xu, "Shortest path planning for a tethered robot," *Computational Geometry*, vol. 48, no. 9, pp. 732–742, 2015.
- [24] V. Narayanan, P. Vernaza, M. Likhachev, and S. M. LaValle, "Planning under topological constraints using beam-graphs," in *2013 IEEE International Conference on Robotics and Automation*, 2013, pp. 431–437.
- [25] T. Yang, R. Xiong, and Y. Wang, "Efficient distance-optimal tethered path planning in planar environments: The workspace convexity," *arXiv:2208.03969*, 2022.
- [26] F. W. Sinden, "The tethered robot problem," *The International Journal of Robotics Research*, vol. 9, no. 1, pp. 122–133, 1990.
- [27] P. G. Xavier, "Shortest path planning for a tethered robot or an anchored cable," in *Proceedings 1999 IEEE International Conference on Robotics and Automation*, vol. 2, 1999, pp. 1011–1017.
- [28] S. Bhattacharya, M. Likhachev, and V. Kumar, "Identification and representation of homotopy classes of trajectories for search-based path planning in 3D," in *Robotics: Science and Systems VII*, 2012, pp. 9–16.
- [29] R. H. Teshnizi and D. A. Shell, "Motion planning for a pair of tethered robots," *Autonomous Robots*, vol. 45, no. 5, pp. 693–707, 2021.
- [30] S. Kim and M. Likhachev, "Path planning for a tethered robot using multi-heuristic A* with topology-based heuristics," in *2015 IEEE/RSJ International Conference on Intelligent Robots and Systems (IROS)*, 2015, pp. 4656–4663.
- [31] V. A. K. T. Rajan, A. Nagendran, A. Dehghani-Sanij, and R. C. Richardson, "Tether monitoring for entanglement detection, disentanglement and localisation of autonomous robots," *Robotica*, vol. 34, no. 3, pp. 527–548, 2016.
- [32] R. H. Teshnizi and D. A. Shell, "Computing cell-based decompositions dynamically for planning motions of tethered robots," in *2014 IEEE International Conference on Robotics and Automation (ICRA)*, 2014, pp. 6130–6135.
- [33] P. McGarey, K. MacTavish, F. Pomerleau, and T. D. Barfoot, "The line leading the blind: Towards nonvisual localization and mapping for tethered mobile robots," in *2016 IEEE International Conference on Robotics and Automation (ICRA)*, 2016, pp. 4799–4806.
- [34] L. Petit and A. L. Desbiens, "TAPE: Tether-aware path planning for autonomous exploration of unknown 3D cavities using a tangle-compatible tethered aerial robot," *IEEE Robotics and Automation Letters*, vol. 7, no. 4, pp. 10550–10557, 2022.
- [35] P. Abad-Manterola, I. A. D. Nesnas, and J. W. Burdick, "Motion planning on steep terrain for the tethered axel rover," in *2011 IEEE International Conference on Robotics and Automation*, 2011, pp. 4188–4195.
- [36] A. K. Al Mhdawi, N. Wright, S. Benson, and M. Haroutunian, "CART-I: Design and development of collision avoidance robotic tether for underwater nuclear inspection vehicles," in *OCEANS 2021: San Diego – Porto*, 2021, pp. 1–7.
- [37] S. Hert and V. Lumelsky, "The ties that bind: Motion planning for multiple tethered robots," *Robotics and Autonomous Systems*, vol. 17, no. 3, pp. 187–215, 1996.
- [38] A. Patil, M. Park, and J. Bae, "Coordinating tethered autonomous underwater vehicles towards entanglement-free navigation," *Robotics*, vol. 12, no. 3, p. 85, 2023.
- [39] L. S. R. Mechsy, M. U. B. Dias, W. Pragnithmukar, and A. L. Kulasekera, "A novel offline coverage path planning algorithm for a tethered robot," in *2017 17th International Conference on Control, Automation and Systems (ICCAS)*, 2017, pp. 218–223.
- [40] G. Sharma, P. Poudel, A. Dutta, V. Zeinali, T. T. Khoei, and J.-H. Kim, "A 2-approximation algorithm for the online tethered coverage problem," in *Robotics: Science and Systems*, 2019.
- [41] S. Bhattacharya, "Search-based path planning with homotopy class constraints," *Proceedings of the AAAI Conference on Artificial Intelligence*, vol. 24, no. 1, pp. 1230–1237, 2010.
- [42] O. Salzman and D. Halperin, "Optimal motion planning for a tethered robot: Efficient preprocessing for fast shortest paths queries," in *2015 IEEE International Conference on Robotics and Automation (ICRA)*, 2015, pp. 4161–4166.
- [43] M. M. Tanner, J. W. Burdick, and I. A. D. Nesnas, "Online motion planning for tethered robots in extreme terrain," in *2013 IEEE International Conference on Robotics and Automation*, 2013, pp. 5557–5564.
- [44] M. S. A. Mahmud, M. S. Z. Abidin, S. Buyamin, A. A. Emmanuel, and H. S. Hasan, "Multi-objective route planning for underwater cleaning robot in water reservoir tank," *Journal of Intelligent & Robotic Systems*, vol. 101, pp. 1–16, 2021.
- [45] D. Grigoriev and A. Slissenko, "Polytime algorithm for the shortest path in a homotopy class amidst semi-algebraic obstacles in the plane," in *ACM Symposium Symbolic and Algebraic Computations*, 1998, pp. 17–24.
- [46] S. M. LaValle, *Planning Algorithms*. Cambridge University Press, 2006.
- [47] J. C. Latombe, *Robot Motion Planning*. Kluwer Academic Publishers, 1991.
- [48] A. Hatcher, *Algebraic Topology*. Cambridge University Press, 2005.
- [49] E. W. Chambers, E. Colin de Verdière, J. Erickson, S. Lazard, F. Lazarus, and S. Thite, "Homotopic Fréchet distance between curves or, walking

- your dog in the woods in polynomial time,” *Computational Geometry*, vol. 43, no. 3, pp. 295–311, 2010.
- [50] J. Hershberger and J. Snoeyink, “Computing minimum length paths of a given homotopy class,” *Computational Geometry*, vol. 4, no. 2, pp. 63–97, 1994.
- [51] D. Burago, Y. Burago, and S. Ivanov, *A Course in Metric Geometry*. American Mathematical Society, 2001.
- [52] J. Lee, *Introduction to Topological Manifolds*. Springer, 2010.
- [53] S. Bhattacharya and R. Ghrist, “Path homotopy invariants and their application to optimal trajectory planning,” *Annals of Mathematics and Artificial Intelligence*, vol. 84, pp. 139–160, 2018.
- [54] S. Bhattacharya, M. Likhachev, and V. Kumar, “Topological constraints in search-based robot path planning,” *Autonomous Robots*, vol. 33, no. 3, pp. 273–290, 2012.
- [55] H. Alt, C. Knauer, and C. Wenk, “Comparison of distance measures for planar curves,” *Algorithmica*, vol. 38, pp. 45–58, 2004.
- [56] H. Alt and M. Godau, “Computing the Fréchet distance between two polygonal curves,” *International Journal of Computational Geometry & Applications*, vol. 05, no. 1 & 2, pp. 75–91, 1995.
- [57] S. Bhattacharya, R. Ghrist, and V. Kumar, “Persistent homology for path planning in uncertain environments,” *IEEE Transactions on Robotics*, vol. 31, no. 3, pp. 578–590, 2015.
- [58] B. Tovar, F. Cohen, and S. M. LaValle, “Sensor beams, obstacles, and possible paths,” in *Algorithmic Foundation of Robotics VIII*. Springer Berlin Heidelberg, 2010, pp. 317–332.
- [59] V. Guillemin and A. Pollack, *Differential Topology*. Prentice Hall, Inc., 1974.
- [60] T. G. Faticoni, “Modules and point set topological spaces,” in *Abelian Groups, Rings, Modules, and Homological Algebra*. Chapman and Hall/CRC, 2016, pp. 123–142.

• • •